

LOC/DME I-EKO	APP CRS	Rwy ldg	6418
108.5	243°	TDZE	5064
Chan 22		Apt Elev	5140

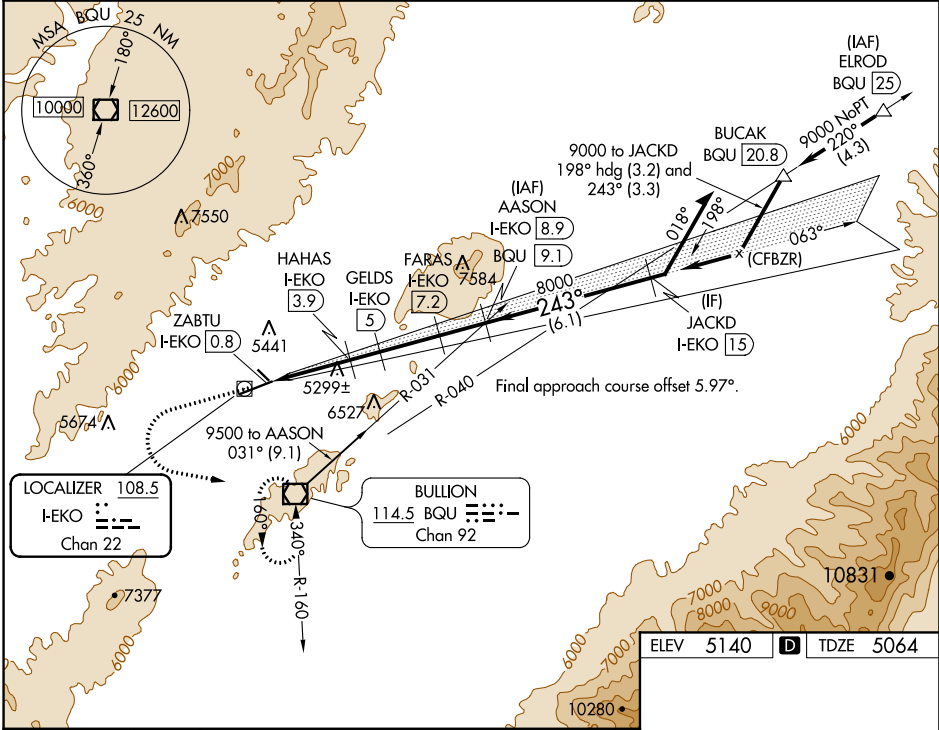
LDA/DME RWY 24  
ELKO RGNL (EKO)

**⚠** Inoperative table does not apply to Cats A and B. For inop MALSR, increase S-24 Cat C and D visibility to 2 miles. Rwy 24 helicopter visibility reduction below 3/4 SM NA. Circling Rwy 24 NA at night.

**MALSR**

**MISSED APPROACH:** Climb to 6600 then climbing left turn to 10000 direct BQU VOR/DME and hold, continue climb-in-hold to 10000.

ASOS 119.275	SALT LAKE CENTER 132.25 338.35	UNICOM 123.0 (CTAF) 0
-----------------	-----------------------------------	--------------------------



	6600	10000	BQU
	↑	↩	◻
	AASON I-EKO 8.9		
	Remain within 10 NM		
	FARAS I-EKO 7.2	JACKD I-EKO 15	9500
	HAHAS I-EKO 3.9	6240	6600
	ZABTU I-EKO 0.8	6240	6600
	3.42° TCH 51	6240	6600
	3.1 NM	1.1 NM	2.2 NM
	1.7 NM	6.1 NM	
CATEGORY	A	B	C
S-24	5800-1	736 (700-1)	5800-1 5/8 736 (700-1 5/8)
CIRCLING	5920-1 780 (800-1)	6100-1 1/2 960 (1000-1 1/2)	6620-3 1480 (1500-3) 6980-3 1840 (1900-3)

