

FALLON, NEVADA

RNAV (GPS) RWY 31L

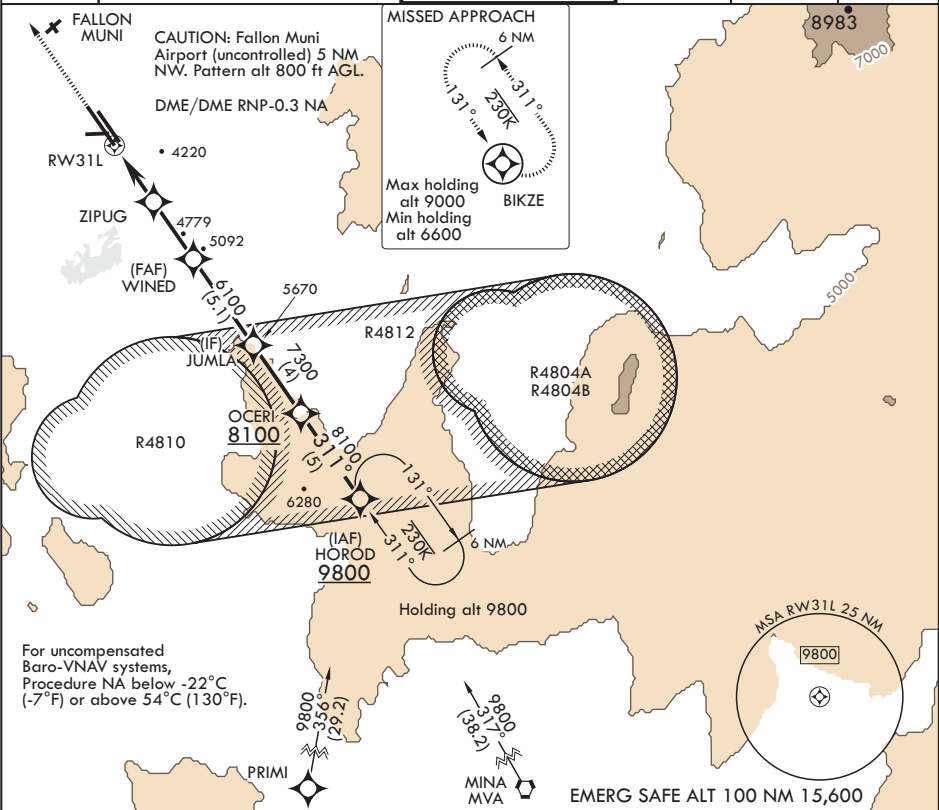
APCH CRS 311°	Rwy Idg TDZE Arpt Elev	14,001 3927 3935
------------------	------------------------------	------------------------

AL-143 (USN)

FALLON NAS (VAN VOORHIS FLD) (KNFL)

MISSED APPROACH: Climb to 6600 direct BIKZE and hold.	
---	--

ATIS★ 370.925	NAVY FALLON APP CON/DEP CON 120.85 360.2	NAVY FALLON TOWER★ 119.25 340.2	GND CON 251.15	CLNC DEL 353.55	ASR/PAR
------------------	---	------------------------------------	-------------------	--------------------	---------



6600 BIKZE		JUMLA		ELEV 3935	TDZE 3927
*LNAV only		WINED			
RW31L		ZIPUG		BCN TWR 4061	
* 1.1 NM to RW31L		4980*		7002 x 154	
3.3 NM		3.4 NM		11,076 x 200	
GP 3.00°		TCH 55		311° to RW31L	
CATEGORY	A	B	C	D	
LNAV/VNAV DA	4206-¾	279	(300-¾)		
LNAV MDA	4380-1	453 (500-1)	4380-1¾	453 (500-1¾)	
CIRCLING	4400-1	465 (500-1)	4700-2¼ 765 (800-2¼)	4920-3 985 (1000-3)	

FALLON, NEVADA

39°25'N - 118°42'W

FALLON NAS (VAN VOORHIS FLD) (KNFL)

Amdt 2 03JAN19

RNAV (GPS) RWY 31L

SW-4, 03 DEC 2020 to 31 DEC 2020

SW-4, 03 DEC 2020 to 31 DEC 2020