

FALLON, NEVADA

TACAN RWY 13R

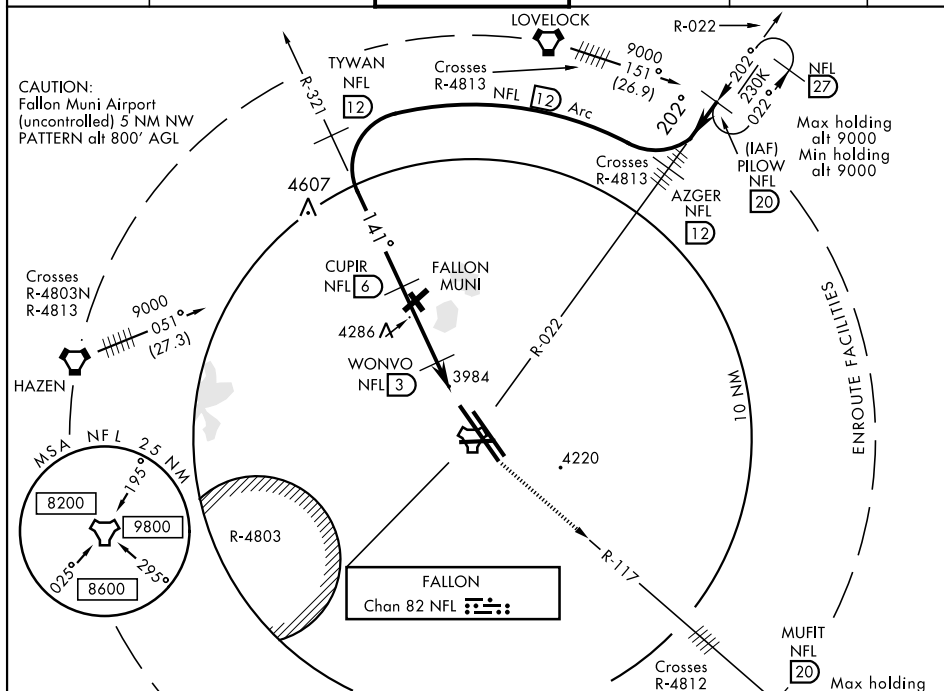
TACAN NFL Chan 82	APCH CRS 141°	Rwy Idg 14,001 TDZE 3935 Arpt Elev 3935
-----------------------------	-------------------------	--------------------------------------------------------------------

AL-143 [USN]

FALLON NAS (VAN VOORHIS FLD) (KNFL)

† MISSED APPROACH: Climb direct NFL TACAN, then climbing left turn to 9800. Intercept NFL R-117 outbound to MUFIT and hold. Continue climb-in-hold to 9800.

ATIS ★ 370.925	NAVY FALLON APP CON 120.85 360.2	NAVY FALLON TOWER ★ 119.25 340.2	GND CON 251.15	CLNC DEL 353.55	ASR/PAR
-------------------	-------------------------------------	-------------------------------------	-------------------	--------------------	---------



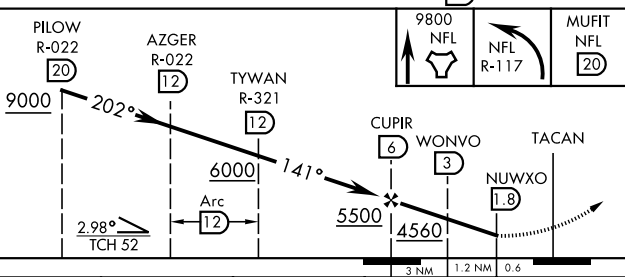
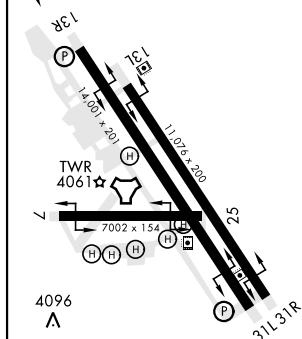
EMERG SAFE ALT 100 NM 15.600


ELEV 3935		TDZE 3935
-----------	--	-----------

† CAUTION: Missed Approach
Minimum Climb Rate to 9800

Knots	60	120	180	240	300	360
V/V(fpm)	220	440	660	880	1100	1320

ATC Minimum Climb Rate



CATEGORY	A		B		C		D	
S-13R	4320-1	385	(400-1)		4320-1½	385	(400-1½)	
 CIRCLING	4400-1	465	(500-1)		4700-2¼ 765 (800-2¼)	4920-3 985 (1000-3)		

FALLON, NEVADA

39°25'N-118°42'W FALLON NAS (VAN VOORHIS FLD) (KNFL)

Amdt 2 03JAN19

TACAN RWY 13R

SW-4, 03 DEC 2020 to 31 DEC 2020