

VOR/DME RWY 21
KINGMAN (IGM)



MISSED APPROACH: Climbing right turn to 6000 via IGM VOR/DME R-208 then climbing right turn to 9000 direct IGM VOR/DME and hold.

ASOS 119.275	LOS ANGELES CENTER 124.85 319.2	UNICOM 122.8 (CTAF) 0
------------------------	---	---------------------------------

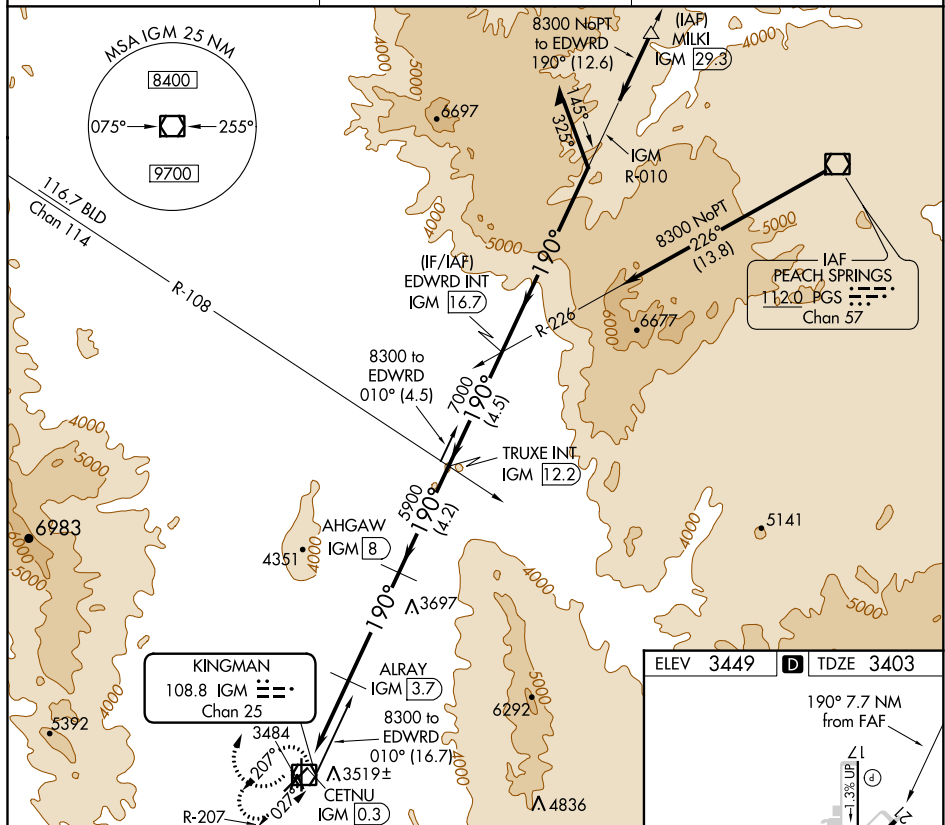
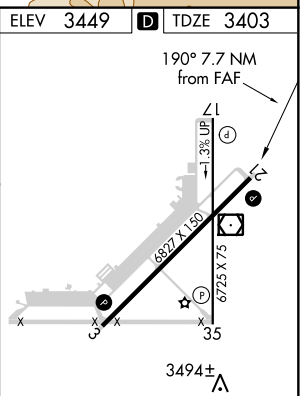


Figure 1 is a sample chart showing a portion of a coastal area. The chart includes a compass rose, a scale bar, and a track line with various bearings and distances. Key locations marked include 6000, 9000, IGM, AHGAW IGM, TRUXE INT IGM, EDWRD INT IGM, and CETNU IGM. A track line is plotted with bearings of 190° and 070°, and distances of 3.4 NM, 4.3 NM, 4.2 NM, and 4.5 NM. A note indicates "Remain within 10 NM".

CATEGORY	A	B	C	D
S-21	3880-1	477 (500-1)	3880-1¼ 477 (500-1¼)	3880-1½ 477 (500-1½)
CIRCLING	3980-1 531 (600-1)	4020-1 571 (600-1)	4020-1½ 571 (600-1½)	4140-2¼ 691 (700-2¼)



MIRL Rwy 3-21 and 17-35 (L)
REIL Rwy 3 and 21 (L)

SW-4, 03 DEC 2020 to 31 DEC 2020