

FYTTR FIVE DEPARTURE (FYTTR5 • FYTTR)

SHL-227 [USAF]

NELLIS AFB (KLSV)

LAS VEGAS, NEVADA

ATIS
270.1
CLNC DEL
120.9 289.4
GND CON
121.8 275.8
NELLIS TOWER
132.55 327.0
NELLIS CONTROL
119.35 254.4
NELLIS DEP CON
135.1 385.4

Rwy	Knots	60	120	180	240	300	360
3L (a)	V/V(fpm)	394	788	1182	1576	1970	2364
3R (a)	V/V(fpm)	392	784	1176	1568	1960	2352
21L (b)	V/V(fpm)	388	776	1164	1552	1940	2328
21R (b)	V/V(fpm)	390	780	1170	1560	1950	2340

Minimum Climb Rate

(a) to 9300

(b) to 13,500

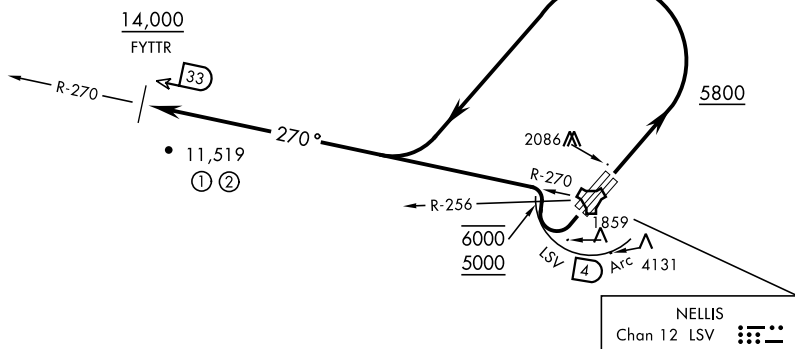
RADAR REQUIRED ABOVE FL190

RADAR REQUIRED FOR RWY 3L/R DEPARTURES

- ① 29.84 NM from Rwy 21L
- ② 29.71 NM from Rwy 21R
- ③ 15.55 NM from Rwy 3L
- ④ 15.69 NM from Rwy 3R

CAUTION: If unable to comply with restrictions advise ATC prior to departure.

③ ④
7233 .



DEPARTURE ROUTE DESCRIPTION

TAKE-OFF RWY 3L/R: Fly runway heading until reaching 5800, then climbing left turn to intercept LSV TACAN R-270 outbound. Cross FYTTR at or above 14,000 or as assigned, then via assigned route.

TAKE-OFF RWY 21L/R: Turn right to intercept LSV TACAN R-270 outbound, remain within LSV 4 DME until joining LSV R-270, cross LSV R-256 between 5000 and 6000. Cross FYTTR at or above 14,000 or as assigned, then via assigned route.

NOISE ABATEMENT PROCEDURES: Fly IAW Nellis Noise Abatement instructions published in AP/1.

FYTTR FIVE DEPARTURE (FYTTR5 • FYTTR)

LAS VEGAS, NEVADA

NELLIS AFB (KLSV)

Amdt 4 29MAR18