

## HI-ILS or LOC Z RWY 21L

LOC I-DIQ  
109.1APCH CRS  
209°

Rwy Idg	21L	21R
TDZE	10,051	10,120
Arpt Elev	1865	1869

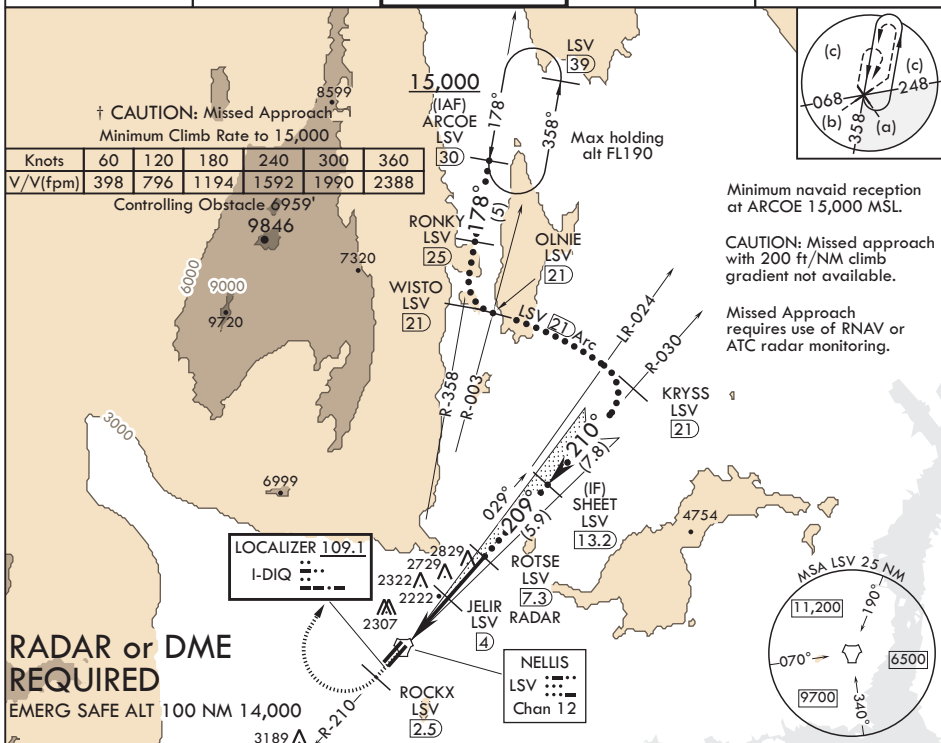
JAL-227 (USAF)

NELLIS AFB (KLSV)

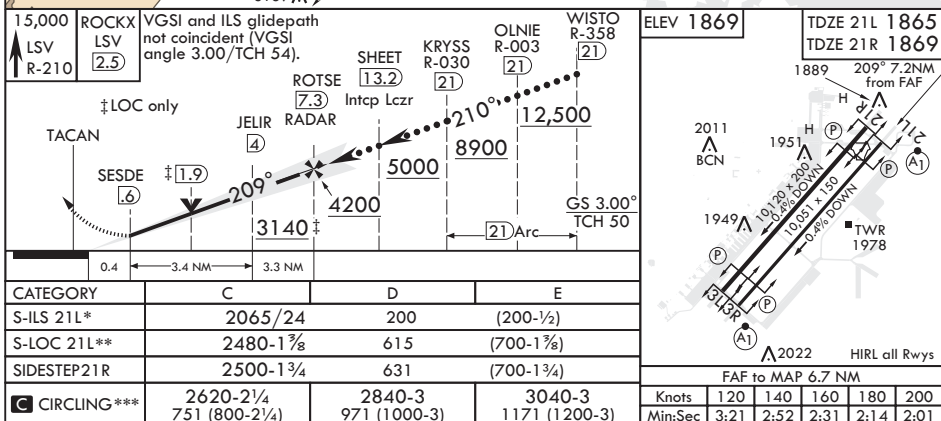
† When ALS inop, increase CAT CDE RVR to 40, vis to 3/4 mile.  
 \*\* When ALS inop, increase CAT CDE vis to 1 3/4 miles.  
 \*\*\* Circling not authorized E of Rwy 3R-21L.

Rwy 21L  
ALS-F-1  
(A1)

† MISSED APPROACH: Climb to 15,000, intercept LSV TACAN R-210 to 2.5 DME (ROCKX), then climbing right turn heading 020° to join LSV R-358 to ARCOE and hold, continue climb-in-hold to 15,000. Missed approach not for civil use.

ATIS  
270.1APP CON  
124.95 273.55TOWER  
132.55 327.0GND CON  
121.8 275.8CLNC DEL  
120.9 289.4RADAR or DME  
REQUIRED

EMERG SAFE ALT 100 NM 14,000



## HI-ILS or LOC Z RWY 21L