

LAS VEGAS, NEVADA

LAS VEGAS, NEVADA		21L	21R
LOC I-DIQ <u>109.1</u>	APCH CRS 209°	Rwy ldg 10,051	10,120
		TDZE 1865	1869
		Arpt Elev 1869	

AL-227 (USAF)

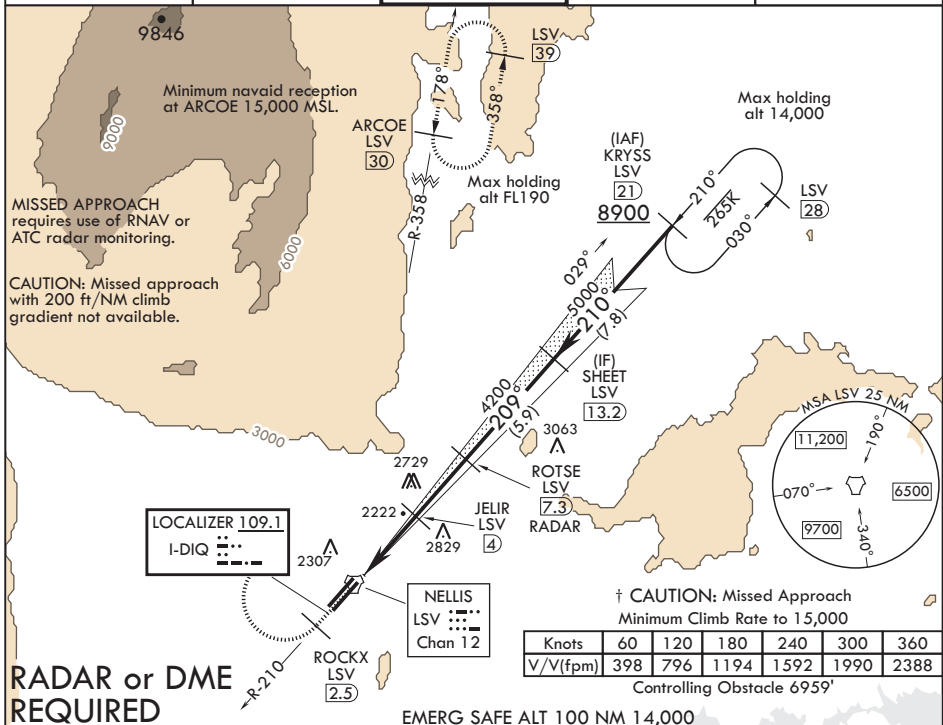
NELLIS AFB (KLSV)

T * When ALS inop, increase all CAT RVR to 40, vis to 3/4 mile.
 ** When ALS inop, increase CAT AB RVR to 55, vis to 1 mile, CAT CDE vis to 1 3/4 miles.
 *** Circling not authorized E of Rwy 3R-21L.

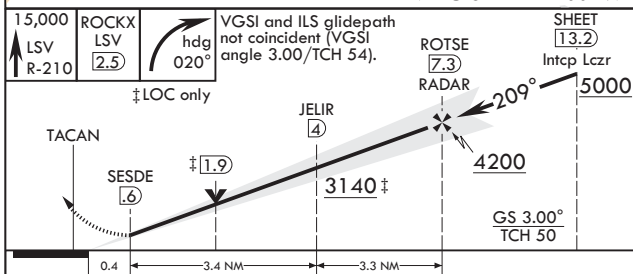
Rwy 21
ALSF-1

† MISSED APPROACH: Climb to 15,000, intercept LSV TACAN R-210 to 2.5 DME (ROCKX), then climbing right turn heading 020° to join LSV TACAN R-358 to ARCOE and hold, continue climb in hold to 15,000. Missed approach not for civil use.

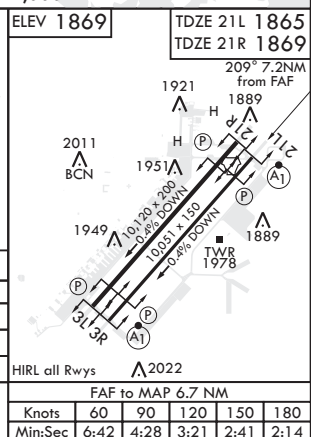
ATIS 270.1	APP CON 124.95 273.55	TOWER 132.55 327.0	GND CON 121.8 275.8	CLNC DEL 120.9 289.4
---------------	--------------------------	-----------------------	------------------------	-------------------------

RADAR or DME
REQUIRED

EMERG SAFE ALT 100 NM 14,000



CATEGORY	A	B	C	D	E
S-LS 21L*	2065/24		200	(200-½)	
S-LOC 21L**	2480/24 615 (700-½)		2480-1⅞	615	(700-⅞)
SIDESTEP21R	2500-1 631 (700-1)		2500-1¼	631	(700-1¼)
C CIRCLING***	2480-1 611 (700-1)	2620-1 751 (800-1)	2620-2¼ 751 (800-2¼)	2840-3 971 (1000-3)	3040-3 1171 (1200-3)



LAS VEGAS, NEVADA

36°14'N - 115°02'W

NELLIS AFB (KLSV)

Amdt 9 16JUL20

ILS or LOC X RWY 21L

SW-4, 03 DEC 2020 to 31 DEC 2020

SW-4, 03 DEC 2020 to 31 DEC 2020