

LOC Y RWY 21L

LOC I-DIQ <b>109.1</b>	APCH CRS <b>209°</b>	Rwy ldg 21L <b>10,051</b> TDZE <b>1865</b> Arpt Elev <b>1869</b>	Rwy ldg 21R <b>10,120</b> TDZE <b>1869</b>
---------------------------	-------------------------	------------------------------------------------------------------------	-----------------------------------------------

AL-227 [USAF]

NELLIS AFB (KLSV)

**T** \* When ALS inop, increase CAT CDE vis to 13/8 miles.  
\*\* Circling not authorized E of Rwy 3R-21L.

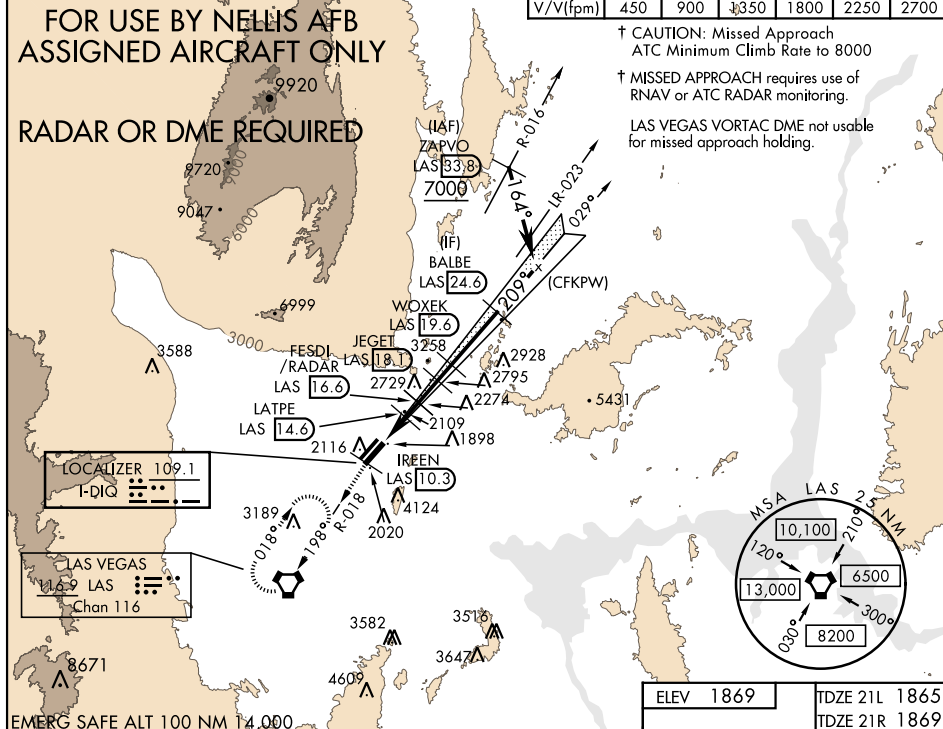


† MISSED APPROACH: Climb to 8000, intercept the LAS VORTAC R-018 to 10.3 DME (IREEN), then to LAS and hold.

ATIS 270.1	NELLIS APP CON 124.95 273.55	NELLIS TOWER 132.55 327.0	GND CON 121.8 275.8	CLNC DEL 120.9 289.4															
		<table><tr><td>Knots</td><td>60</td><td>120</td><td>180</td><td>240</td><td>300</td><td>360</td></tr><tr><td>V/V(fpm)</td><td>450</td><td>900</td><td>1350</td><td>1800</td><td>2250</td><td>2700</td></tr></table>				Knots	60	120	180	240	300	360	V/V(fpm)	450	900	1350	1800	2250	2700
Knots	60	120	180	240	300	360													
V/V(fpm)	450	900	1350	1800	2250	2700													

FOR USE BY NELLIS AFB  
ASSIGNED AIRCRAFT ONLY

RADAR OR DME REQUIRED

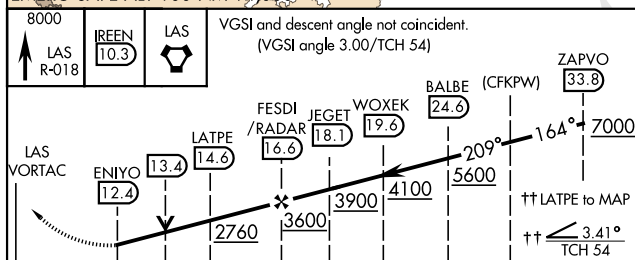


† CAUTION: Missed Approach  
ATC Minimum Climb Rate to 8000

† MISSED APPROACH requires use of RNAV or ATC RADAR monitoring.

LAS VEGAS VORTAC DME not usable  
for missed approach holding.

EMERG SAFE ALT 100 NM 14.000

[illegible]

Knots	60	90	120	150	180
Min:Sec	4:12	2:48	2:06	1:41	1:24

LAS VEGAS, NEVADA

36°14'N-115°02'W

NELLIS AFB (KLSV)

LOC Y RWY 21L

Amdt 7 03JAN19

SW-4, 03 DEC 2020 to 31 DEC 2020