

SHL-227 [USAF]

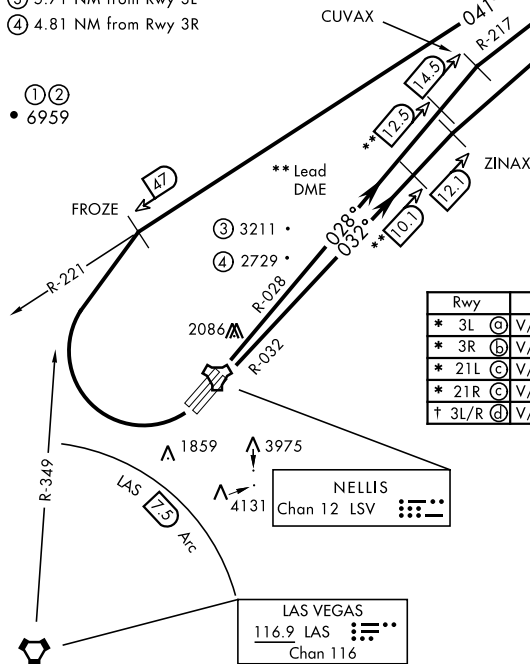
ATIS 270.1  
CLNC DEL  
120.9 289.4  
GND CON  
121.8 275.8  
NELLIS TOWER  
132.55 327.0  
NELLIS DEP CON  
135.1 385.4  
LOS ANGELES CENTER  
124.2 134.65 307.9 343.6

MORMON MESA  
114.3 MMM  
Chan 90  
L-9, H-3

RADAR REQUIRED  
ABOVE FL190

- ① 12.24 NM from Rwy 21R
- ② 12.40 NM from Rwy 21L
- ③ 5.71 NM from Rwy 3L
- ④ 4.81 NM from Rwy 3R

① ②  
• 6959



CAUTION: If unable to comply with restrictions advise ATC prior to departure

Rwy	Knots	60	120	180	240	300	360
* 3L ③	V/V(fpm)	291	582	873	1164	1455	1746
* 3R ④	V/V(fpm)	238	476	714	952	1190	1428
* 21L ③	V/V(fpm)	529	1058	1587	2116	2645	3174
* 21R ③	V/V(fpm)	536	1072	1680	2144	2680	3216
† 3L/R ④	V/V(fpm)	359	718	1077	1436	1795	2154

\* Minimum

† ATC Climb Rate

- ③ to 3600
- ④ to 3000
- ③ to 8700
- ④ to 19,000

NOTE: Chart not to scale



DEPARTURE ROUTE DESCRIPTION

**TAKE-OFF RWY 3L:** Fly runway heading to intercept LSV TACAN R-028 then direct CUVAX, intercept the MMM VORTAC R-217 then direct MMM climbing to FL190 or as assigned, then via assigned route.

**TAKE-OFF RWY 3R:** Fly runway heading to intercept LSV TACAN R-032 then direct ZINAX, intercept the MMM VORTAC R-215 then direct MMM climbing to FL190 or as assigned, then via assigned route.

**TAKE-OFF RWY 21L/R:** Turn right to intercept MMM VORTAC R-221 prior to MMM 47 DME (FROZE), remain north of the LAS VORTAC 7.5 DME, remain East of LAS R-349, intercept MMM R-221 then direct MMM, cross MMM at or above FL190 then via assigned route.

**NOISE ABATEMENT PROCEDURES:** Fly IAW Nellis Noise Abatement instructions published in AP/1.