

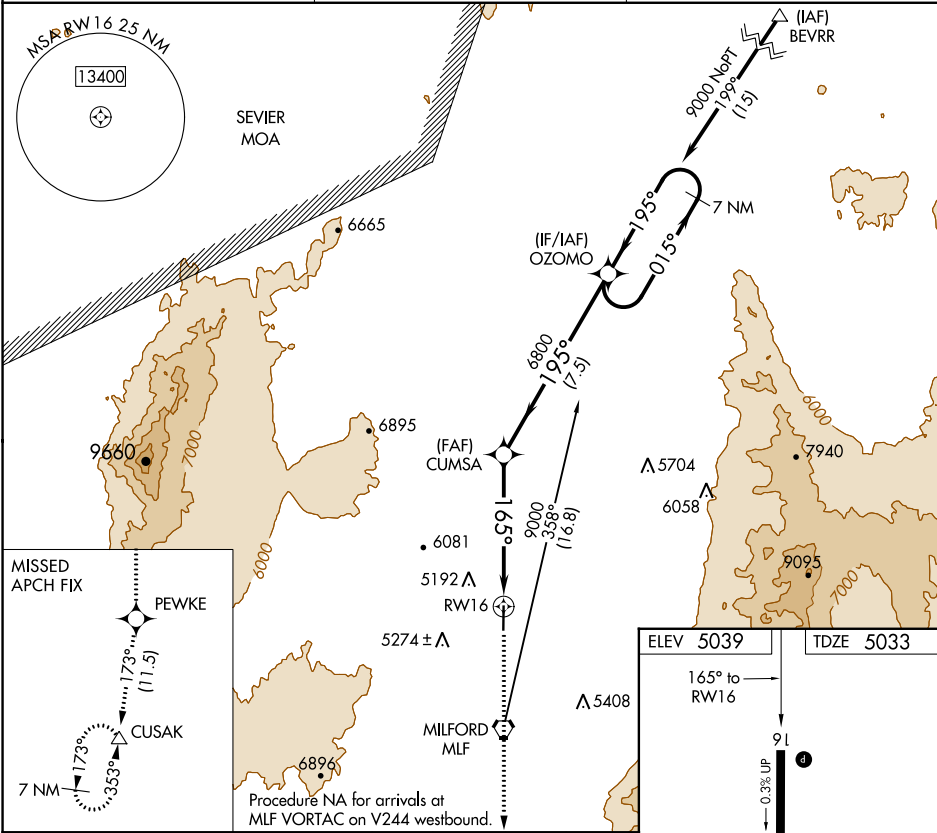
APP CRS	Rwy Idg	5004
165°	TDZE	5033
	Apt Elev	5039

RNAV (GPS) RWY 16

MILFORD MUNI/BEN AND JUDY BRISCOE FIELD (MLF)

RNP APCH.	MISSED APPROACH: Climb to 10000 direct PEWKE and on track 173° to CUSAK and hold.
▼ ▲ When local altimeter setting not received, use Cedar City altimeter setting and increase all MDA 200 feet and increase LNAV Cat C/D visibility ½ mile.	

ASOS 135.025	SALT LAKE CENTER 125.575 379.275	UNICOM 122.8 (CTAF) 1
------------------------	--	---------------------------------



7 NM Holding Pattern		10000	PEWKE	tr 173°	CUSAK
9000 ← 015° 195° →		CUMSA			
6800		3.00° TCH 40 RW16			
7.5 NM		5.5 NM			
CATEGORY	A	B	C	D	
LNAV MDA	5480-1	447 (500-1)	5480-1 3/8	447 (500-1 3/8)	

MIRL Rwy 16-34 1

REIL Rwy 16 and 34 1

SW-4, 03 DEC 2020 to 31 DEC 2020

SW-4, 03 DEC 2020 to 31 DEC 2020