

HI-ILS or LOC Y RWY 14

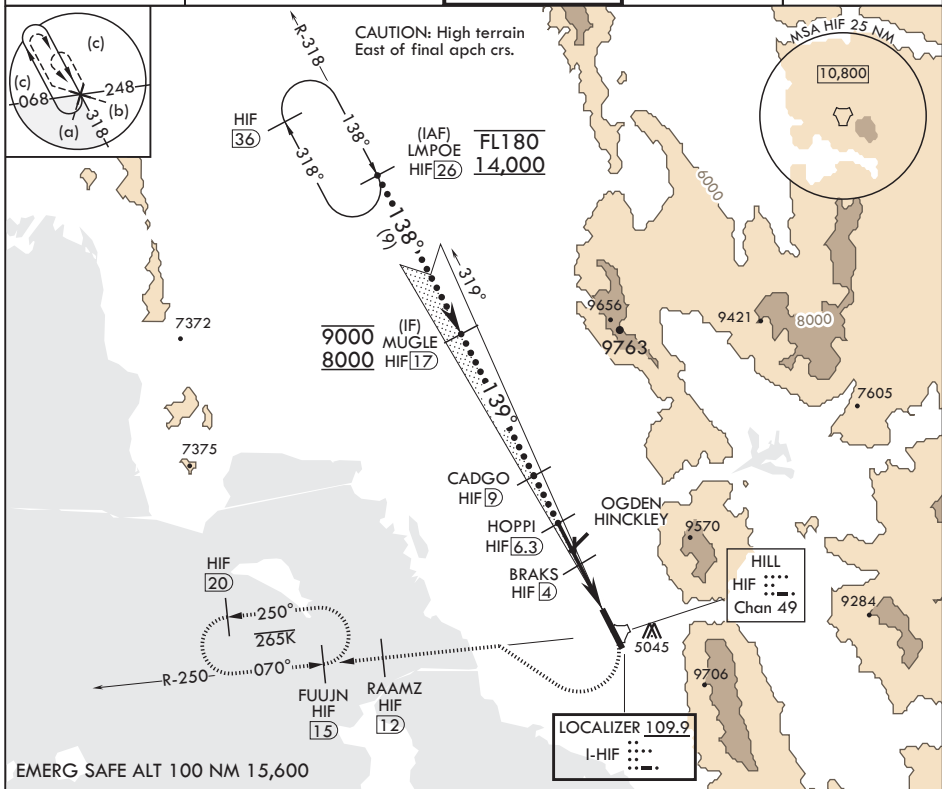
LOC I-HIF 109.9	APCH CRS 139°	Rwy Idg 13,500
		TDZE 4786
		Arpt Elev 4789

JAL-296 (USAF)

HILL AFB (KHIF)

<p>⚠ * When ALS inop, increase RVR to 40, and vis to 3/4 mile. ** When ALS inop, increase RVR to 55, and vis to 1 mile. *** Circling not authorized NE of Rwy 14-32.</p>	<p>ALSF-2</p> 	<p>MISSED APPROACH: Climb to 5300, then turn right heading 290°, remain within HIF TACAN 5.7 DME until established on 290° hdg. Intercept the HIF R-250 outdb. Cross RAAMZ at 6500, then climb and maintain 7200 direct to FUJUN and hold.</p>
---	---	--

<p>ATIS 134.925 397.9</p>	<p>SALT LAKE CITY APP CON 121.1 319.25</p>	<p>TOWER 127.15 263.15</p>	<p>GND CON 121.6 275.8</p>	<p>CLNC DEL 124.1 335.8</p>
-------------------------------	--	--------------------------------	--------------------------------	---------------------------------



LMPOE
R-318
26

MUGLE
Intcp
Lczr
17

CADGO
9

HOPPI
6.3

BRAKS
4

FUJUN
HIF
15

RAAMZ
HIF
12

5300

↑

6500

hdg
290°

HIF
R-250

↶

‡ LOC only

LOC MAP
1.5

TACAN

GS 2.80°
TCH 57

FL180
14,000

9000
8000

38°

39°

7000

6300

6289

5700

2.3 NM

2.5 NM

ELEV 4789

TDZE 4786

139° 4.8NM
from FAF

TWR
4918

BCN
4934

32

CATEGORY

C

D

E

S-ILS 14*

4986/24

200

(200-½)

S-LOC 14**

5040/24

254

(300-½)

C

CIRCLING***

5240-1½
451 (500-1½)

5340-2
551 (600-2)

5860-3
1071 (1100-3)

FAF to MAP 4.8 NM

Knots

120

140

160

180

200

Min:Sec

2:24

2:03

1:48

1:36

1:26

Approach lights
Rwy 14 2400'

HIRL all Rwys

REIL all Rwys

HI-ILS or LOC Y RWY 14