

OGDEN, UTAH

HI-TACAN Z RWY 14

TACAN HIF Chan 49	APCH CRS 131°	Rwy Idg 13,500 TDZE 4786 Arpt Elev 4789
-----------------------------	-------------------------	--

JAL-296 (USAF)

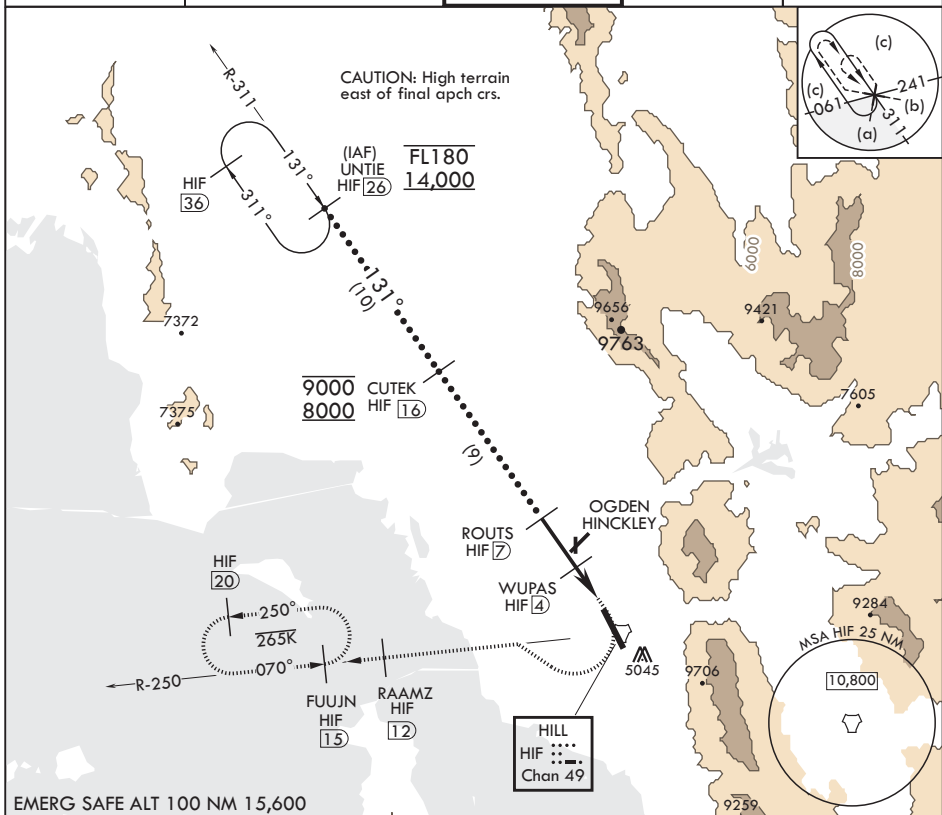
HILL AFB (KHIF)

T * When ALS inop, increase CAT CDE RVR to 55, vis to 1 mile.
** Circling not authorized NE of Rwy 14-32.

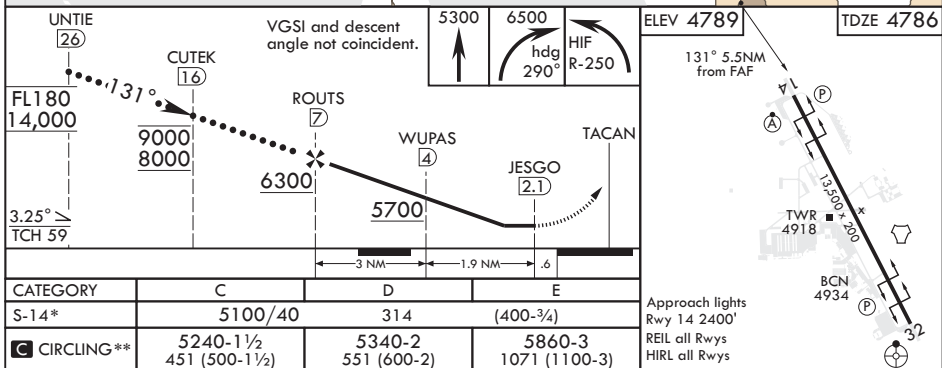
ALSF-2

MISSED APPROACH: Climb to 5300, then turn right heading 290°, remain within HIF TACAN 5.7 DME until established on 290° heading. Intercept the HIF R-250 outbound. Cross RAAMZ at 6500, then climb and maintain 7200 direct to FUJIN and hold.

ATIS 134.925 397.9	SALT LAKE CITY APP CON 121.1 319.25	TOWER 127.15 263.15	GND CON 121.6 275.8	CLNC DEL 124.1 335.8
-----------------------	--	------------------------	------------------------	-------------------------



EMERG SAFE ALT 100 NM 15.600



OGDEN, UTAH

41°07'N - 111°58'W

HILL AFB (KHIF)

Amdt 7 28MAR19

HI-TACAN Z RWY 14

SW-4, 03 DEC 2020 to 31 DEC 2020

SW-4, 03 DEC 2020 to 31 DEC 2020