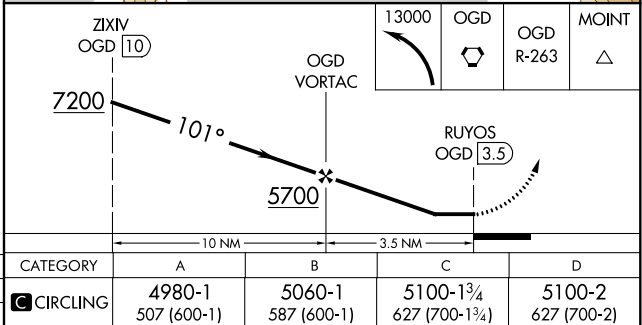


VOR-A
OGDEN-HINCKLEY (OGD)

- MISSED APPROACH:** Climbing left turn to 13000 direct OGD VORTAC and on OGD VORTAC R-263 to MOINT INT/15.1 DME and hold, continue climb-in-hold to 13000.



OGDEN-HINCKLEY (OGD)
VOR-A