


LENNI THREE ARRIVAL

LUKE AIR FORCE BASE (LUF)
GLENDALE, ARIZONA

AL-321 (FAA)

128.45 289.9
LUKE RAPCON ★
118.15 363.125
LUKE TOWER ★
119.1 379.9
ATIS ★
134.925 269.9
METRO
267.4

DRAKE
114.1 DRK 
Chan 88
N34°42.15'-W112°28.82'
L-8, H-4

NOTE: Military Only.

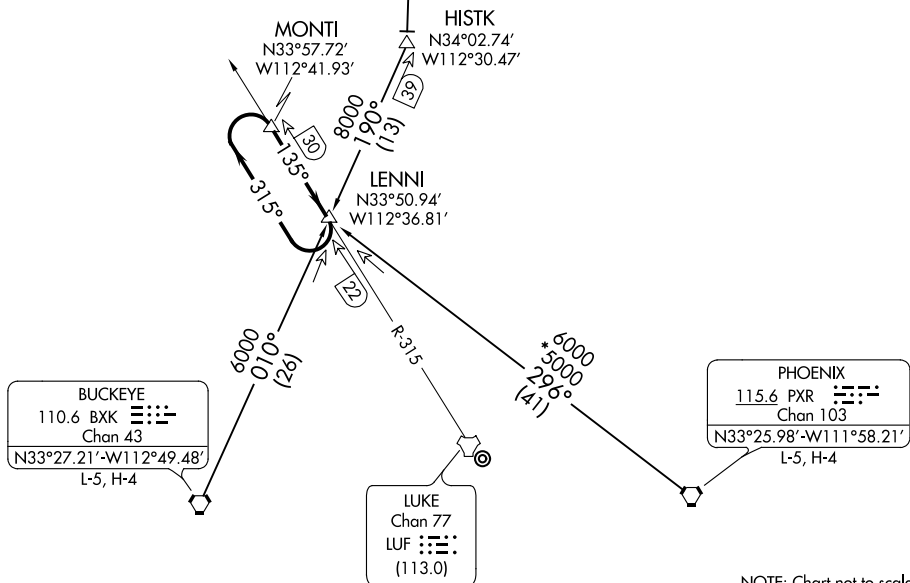
NOTE: DME required.

TURBOJET VERTICAL NAVIGATION PLANNING INFORMATION

Expect to cross LENNI at FL220.

Expect one turn in holding at LENNI.

En-route descent DRAKE TRANSITION only.



NOTE: Chart not to scale.

ARRIVAL ROUTE DESCRIPTION

BUCKEYE TRANSITION (BXK.LENNI3): From over BXK VORTAC via BXK R-010 to LENNI INT. Thence

DRAKE TRANSITION (DRK.LENNI3): From over DRK VORTAC via DRK R-168 and BXK R-010 to LENNI INT. Thence . . .

PHOENIX TRANSITION (PXR.LENNI3): From over PXR VORTAC via PXR R-296 to LENNI INT. Thence

. . . expect one turn in holding at LENNI INT followed by HI-TACAN/HI-ILS or LOC/DME to Luke AFB.

LENNI THREE ARRIVAL

(LENNI.LENNI3) 31AUG08

GLENDAL, ARIZONA
LUKE AIR FORCE BASE (LUF)

SW-4, 03 DEC 2020 to 31 DEC 2020

SW-4, 03 DEC 2020 to 31 DEC 2020