

WAAS CH 73011 W07B	APP CRS 078°	Rwy Idg TDZE 1116 Apt Elev 1135
--	------------------------	---

RNAV (GPS) Y RWY 7R
PHOENIX SKY HARBOR INTL (PHX)

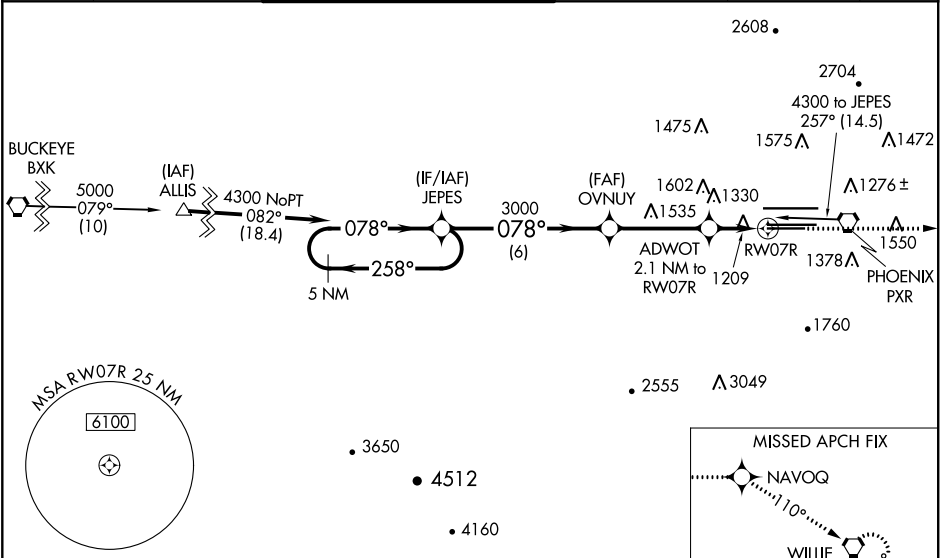
⚠ For inop ALS, increase visibility LPV all Cats to ¾ SM, LNAV/VNAV all Cats to 1 ½ SM, LNAV Cats A/B to 1 SM and C/D to 1 ¾ SM. For uncompensated Baro-VNAV systems, LNAV/VNAV NA below -17°C (2°F) or above 46°C (114°F). DME/DME RNP- 0.3 NA. Rwy 7R helicopter visibility reduction below ¾ SM NA. Simultaneous approach authorized with ILS or LOC Rwy 8. Use of FD or AP providing RNAV track guidance required during simultaneous operations. LNAV procedure NA during simultaneous operations.

MALSR

Ⓜ

MISSED APPROACH: Climb to 5000 direct NAVOQ and via 110° track to IWA VORTAC and hold.

D-ATIS 127.575	PHOENIX APP CON 128.65 353.9	PHOENIX TOWER 118.7 278.8 (Rwy 8-26) 120.9 254.3 (Rwy 7L-25R, 7R-25L)	GND CON 119.75 269.2 (N) 132.55 269.2 (S)	CLNC DEL 118.1 269.2	CPDLC
--------------------------	--	---	---	--------------------------------	-------



ELEV 1135 **D** TDZE 1116

1313 1266 1150 ± 1123 10300 X 150 7800 X 150 1428 251 252 078° to RW07R

HIRL Rwy 8-26, 7L-25R and 7R-25L
REIL Rwy 26

VGSI and RNAV glidepath not coincident (VGSI Angle 3.00/TCH 70).				
5 NM Holding Pattern JEPES OVNUY ADVOT 2.1 NM to RW07R *1840 6 NM 3.6 NM 0.9 1.2 NM				
CATEGORY	A	B	C	D
LPV DA	1390-¾		274 (300-¾)	
LNAV/VNAV DA	1520-1		404 (400-1)	
LNAV MDA	1580-¾ 464 (500-¾)		1580-1 464 (500-1)	
C CIRCLING	1740-1 605 (700-1)		2040-2¾ 905 (1000-2¾) 2560-3 1425 (1500-3)	

SW-4, 03 DEC 2020 to 31 DEC 2020

SW-4, 03 DEC 2020 to 31 DEC 2020