

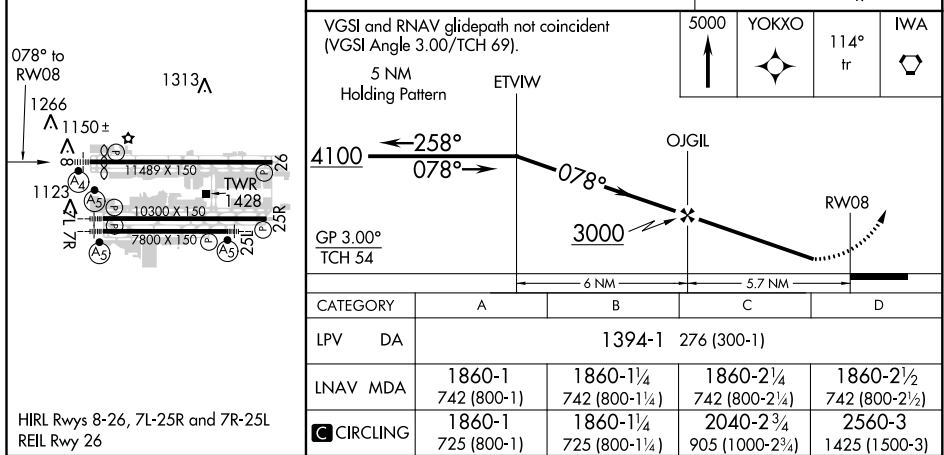
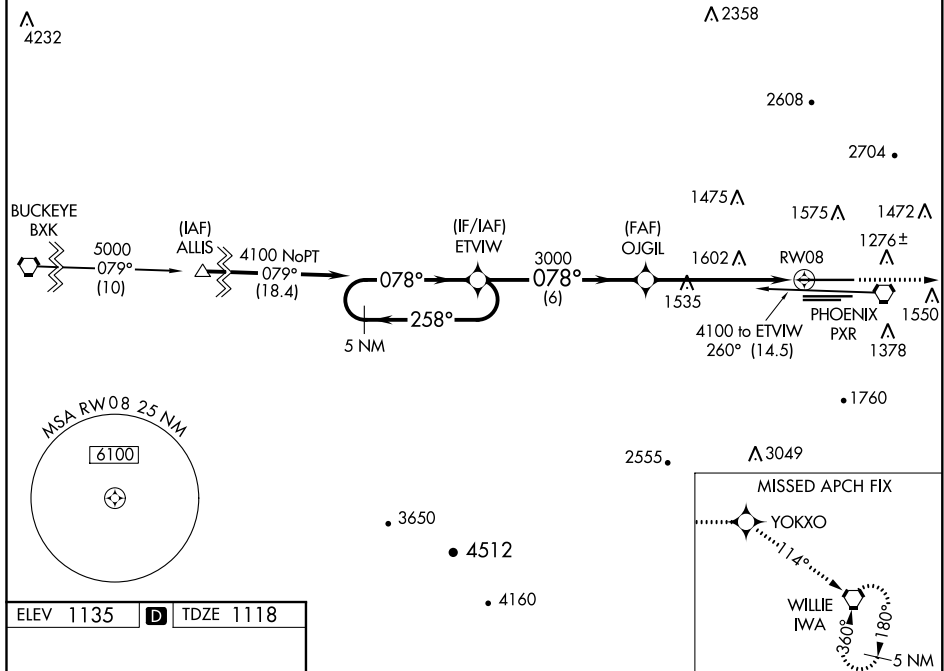


| | | |
|--|------------------------|--|
| WAAS CH 86611 W08A | APP CRS 078° | Rwy Idg 10591 TDZE 1118 Apt Elev 1135 |
|--|------------------------|--|

RNAV (GPS) Y RWY 8
PHOENIX SKY HARBOR INTL (PHX)

| | | | | | | |
|--|--|--|--|--|--------------------------------|-------|
|  Inoperative table does not apply. DME/DME RNP- 0.3 NA. Rwy 8 helicopter visibility reduction below 1 SM NA. | | MALSF  | | MISSED APPROACH: Climb to 5000 direct YOKXO and via 114° track to IWA VORTAC and hold. | | |
| D-ATIS 127.575 | PHOENIX APP CON 128.65 353.9 | PHOENIX TOWER 118.7 278.8 (Rwy 8-26) 120.9 254.3 (Rwy 7L-25R, 7R-25L) | | GND CON 119.75 269.2 (N) 132.55 269.2 (S) | CLNC DEL 118.1 269.2 | CPDLC |



SW-4, 03 DEC 2020 to 31 DEC 2020

SW-4, 03 DEC 2020 to 31 DEC 2020