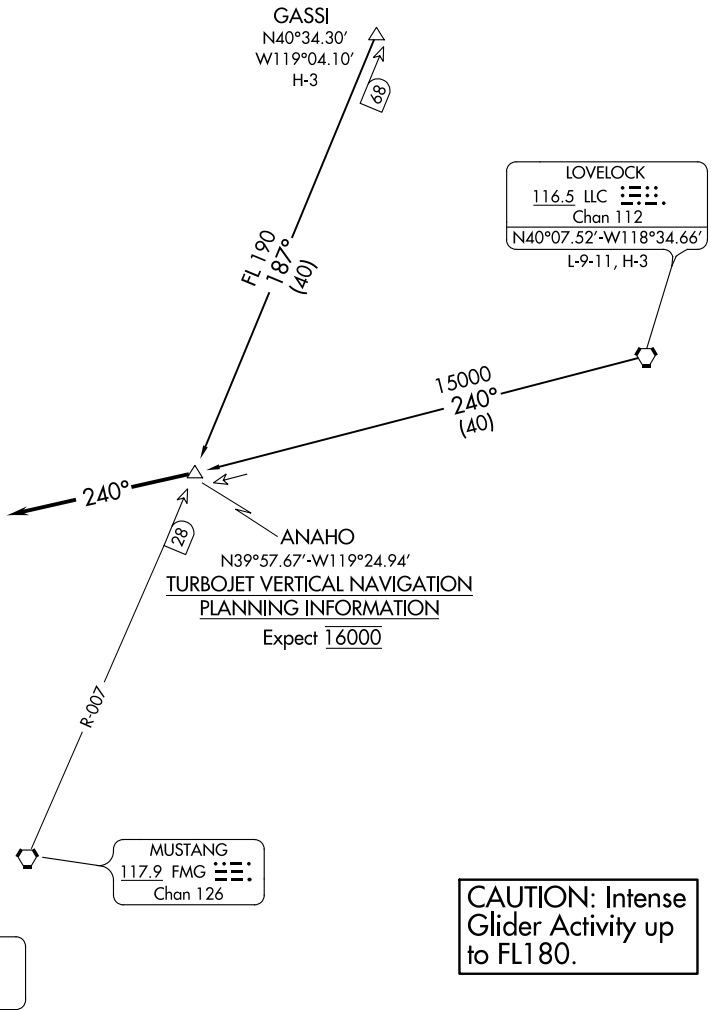


NORCAL APP CON
RWY 16L/R 126.3 353.9
RWY 34L/R 119.2 279.55
D-ATIS 135.8 363.0



NOTE: RADAR required.
NOTE: Chart not to scale.

ARRIVAL ROUTE DESCRIPTION

GASSI TRANSITION (GASSI.ANAHO2): From over GASSI via FMG R-007 to ANAHO INT/DME. Thence....

LOVELOCK TRANSITION (LLC.ANAHO2): From over LLC VORTAC via LLC R-240 to ANAHO INT/DME. Thence....

....Depart ANAHO INT/DME heading 240° for vectors to final approach course.