

LOC/DME I-RNO	APP CRS	Rwy Idg	10001
110.9	164°	TDZE	4415
Chan 46		Apt Elev	4415

ILS Z or LOC Z RWY 16R
RENO/TAHOE INTL (RNO)

⚠ Circling Rwy 7 NA at night. DME/DME RNP-0.3 NA. DME required. RNAV 1-GPS required.

⚠ -15°C

For inop MALSR, increase S-ILS 16R all Cats visibility to 2 1/2 mile.

† RVR 1800 authorized with use of FD or AP or HUD to DA.

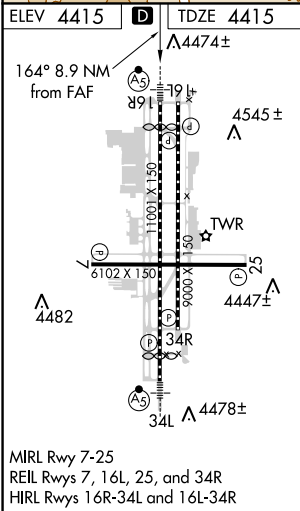
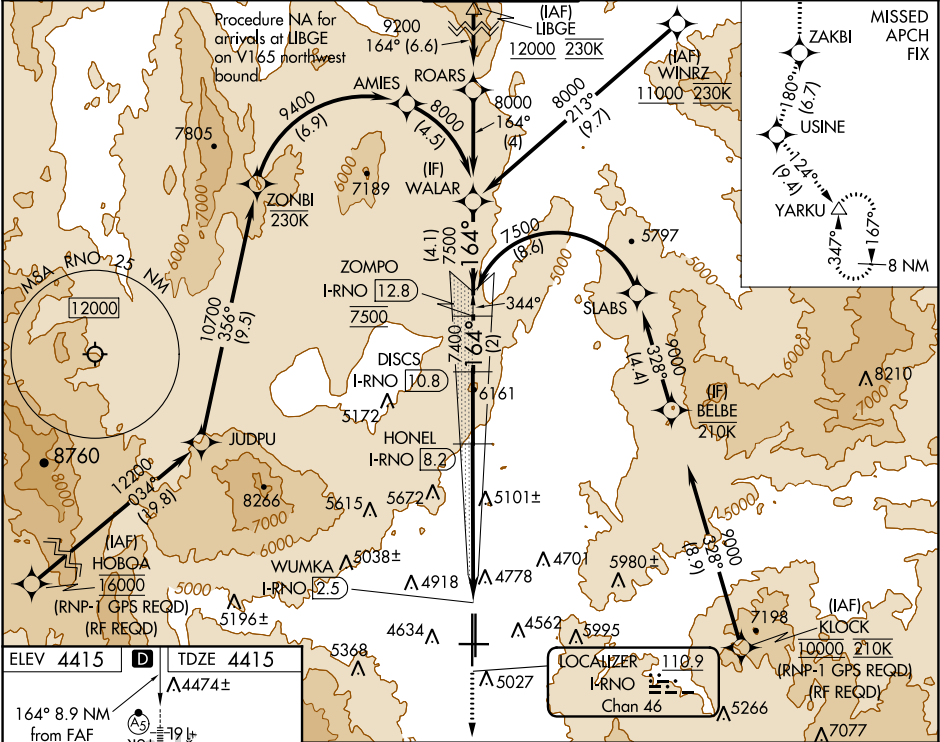
MALSR

AS

MISSED APPROACH: Climb to 13000 on the RNAV missed approach route to YARKU and hold, continue climb-in-hold to 13000.

† Missed approach requires a minimum climb of 390 feet per NM to 8000.

D-ATIS	NORCAL APP CON	RENO TOWER	GND CON	CLNC DEL	CPDLC
135.8 363.0	119.2 279.55 126.3 353.9	118.7 257.8	121.9 348.6	124.9 370.85	



SW-4, 03 DEC 2020 to 31 DEC 2020

SW-4, 03 DEC 2020 to 31 DEC 2020