








APP CRS <b>164°</b>	Rwy Idg <b>10001</b> TDZE <b>4415</b> Apt Elev <b>4415</b>
------------------------	--

RNAV (RNP) Y RWY 16R  
RENO/TAHOE INTL (RNO)

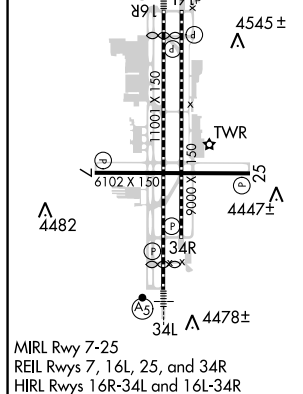
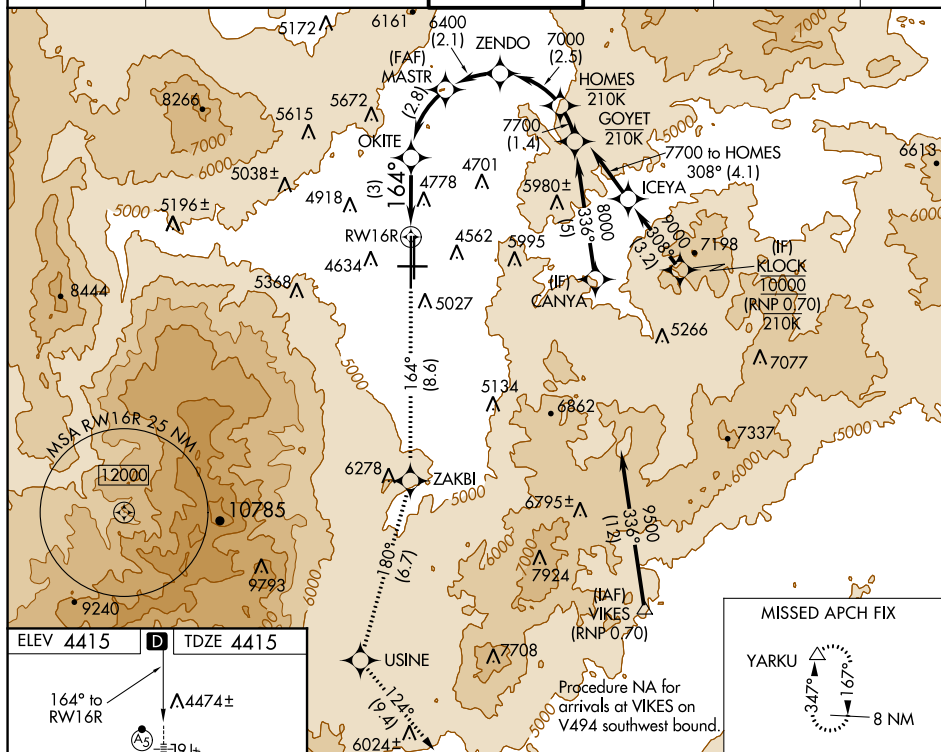
	For uncompensated Baro-VNAV systems, procedure NA below -14°C (7°F) or above 36°C (98°F). For inoperative MALSR, increase RNP 0.17 all Cats visibility to 1 1/4 and RNP 0.30 all Cats visibility to 2 1/2. RF required. GPS required. *Missed approach requires a minimum climb of 260 feet per NM to 7000.
	
	
	
	
	
	

MALSR



**MISSED APPROACH:** Climb to 13000 on track 164° to ZAKBI and on track 180° to USINE and on track 124° to YARKU and hold, continue climb-in-hold to 13000.

D-ATIS	NORCAL APP CON				RENO TOWER	GND CON	CLNC DEL	CPDLC
135.8 363.0	119.2	279.55	126.3	353.9	118.7 257.8	121.9 348.6	124.9 370.85	



VGSi and RNAV glidepath not coincident (VGSi Angle 3.06/TCH 77).				13000 ↑ tr 164°	ZAKBI ✧	tr 180°	USINE ✧	tr 124°	YARKU △
HOMES 7700		ZENDO 7000		MASTR 6400		See planview for multiple IF locations.			
GP 3.10° TCH 63		6400		5465 OKITE		RW16R 164°			
2.5 NM		2.1 NM		2.8 NM		3 NM			
CATEGORY	A		B		C		D		
RNP 0.17 DA*			4817/40		402 (500-¾)				
RNP 0.30 DA			5132-1⅞		717 (800-1⅞)				
AUTHORIZATION REQUIRED									

RNAV (RNP) Y RWY 16R