

APP CRS	Rwy Idg	9000
164°	TDZE	4415
	Apt Elev	4415

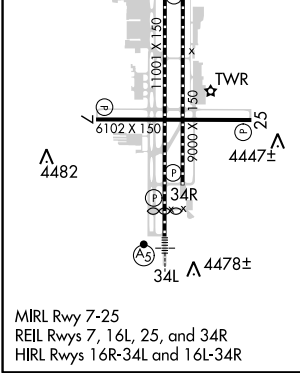
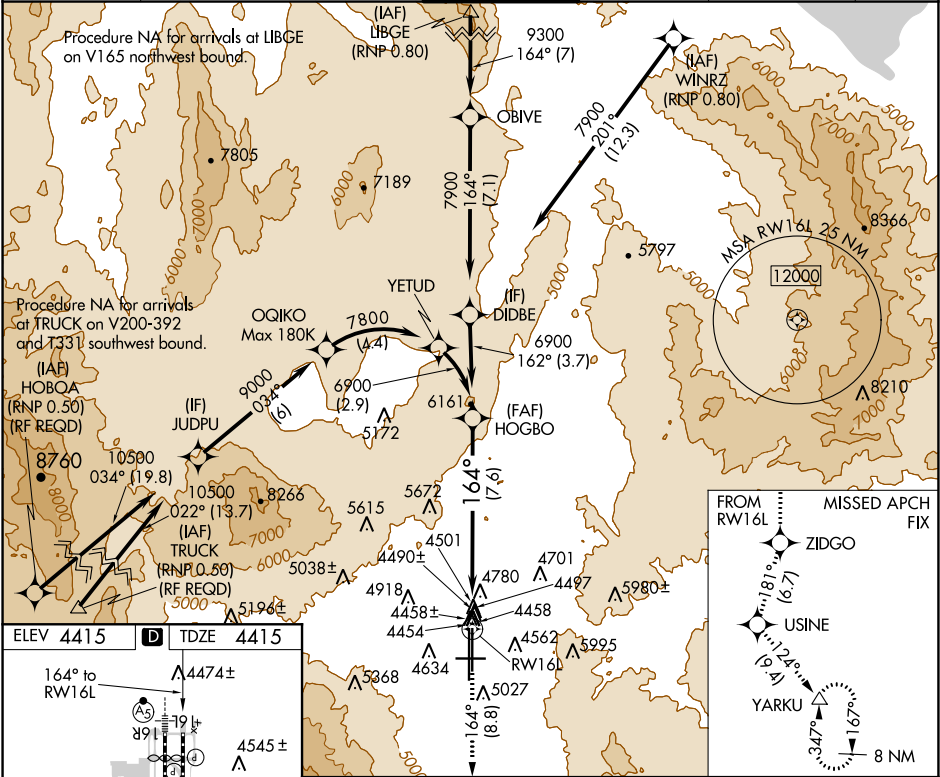
# RNAV (RNP) Z RWY 16L

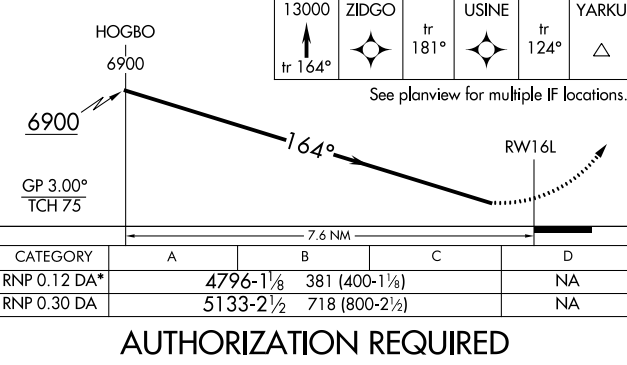
RENO/TAHOE INTL (RNO)

**V** For uncompensated Baro-VNAV systems, procedure NA below -16°C (4°F) or above 54°C (130°F). When VGS1 inop, procedure NA at night. GPS required. \*Missed approach requires a minimum climb of 259 feet per NM to 7000.

**MISSED APPROACH:** Climb to 13000 on track 164° to ZIDGO and on track 181° to USINE and on track 124° to YARKU and hold, continue climb-in-hold to 13000.

D-ATIS	NORCAL APP CON	RENO TOWER	GND CON	CLNC DEL	CPDLC
135.8 363.0	119.2 279.55 126.3 353.9	118.7 257.8	121.9 348.6	124.9 370.85	



				
<p>See planview for multiple IF locations.</p>				
<p>GP 3.00° TCH 75</p>				
<p>7.6 NM</p>				
CATEGORY	A	B	C	D
RNP 0.12 DA*	4796-1⅛	381 (400-1⅛)		NA
RNP 0.30 DA	5133-2½	718 (800-2½)		NA
AUTHORIZATION REQUIRED				

SW-4, 03 DEC 2020 to 31 DEC 2020

SW-4, 03 DEC 2020 to 31 DEC 2020