

APP CRS	Rwy Idg	10001
164°	TDZE	4415
	Apt Elev	4415

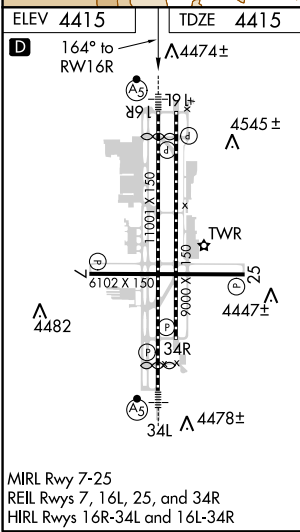
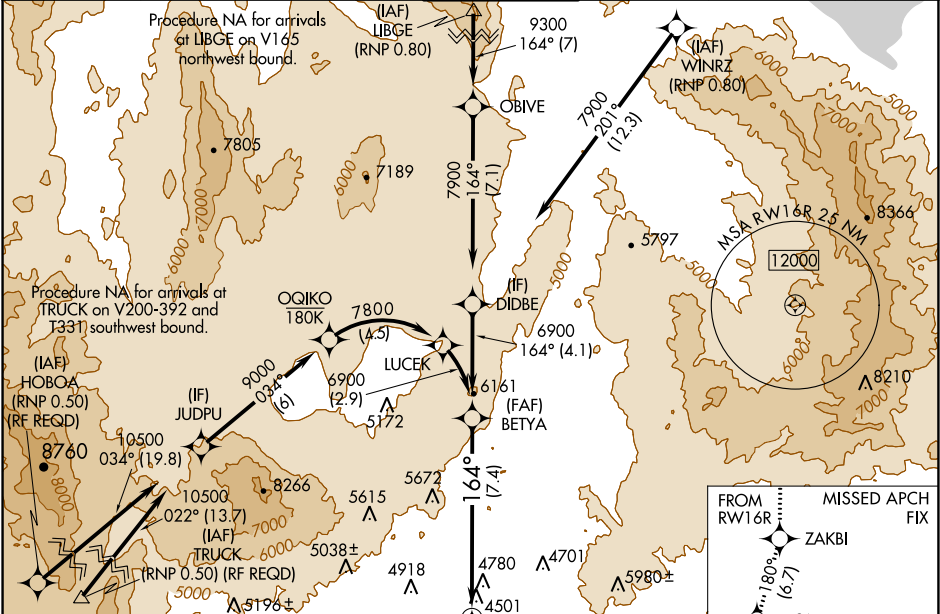
RNAV (RNP) Z RWY 16R

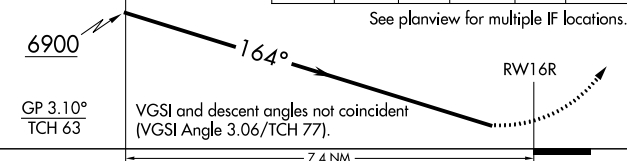
RENO/TAHOE INTL (RNO)

V For uncompensated Baro-VNAV systems, procedure NA below -16°C (4°F) or above 54°C (130°F). For inoperative MALSR, increase RNP 0.17 all Cats visibility to 1½ and RNP 0.30 all Cats visibility to 2½. GPS required. *Missed approach requires a minimum climb of 260 feet per NM to 7000.

MALSR **MISSED APPROACH:** Climb to 13000 on track 164° to ZAKBI and on track 180° to USINE and on track 124° to YARKU and hold, continue climb-in-hold to 13000.

D-ATIS	NORCAL APP CON	RENO TOWER	GND CON	CLNC DEL	CPDLC
135.8 363.0	119.2 279.55 126.3 353.9	118.7 257.8	121.9 348.6	124.9 370.85	



<p>BETYA 6900</p> <p><u>6900</u></p> <p>GP 3.10° TCH 63</p>		<p>13000 ↑ tr 164°</p>	<p>ZAKBI ✧ tr 180°</p>	<p>USINE ✧ tr 124°</p>	<p>YARKU △</p>
<p>See planview for multiple IF locations.</p> 					
CATEGORY	A	B	C	D	
RNP 0.17 DA*	4973-1½	558 (600-1½)		NA	
RNP 0.30 DA	5142-1½	727 (800-1½)		NA	
<h1>AUTHORIZATION REQUIRED</h1>					

SW-4, 03 DEC 2020 to 31 DEC 2020

SW-4, 03 DEC 2020 to 31 DEC 2020