

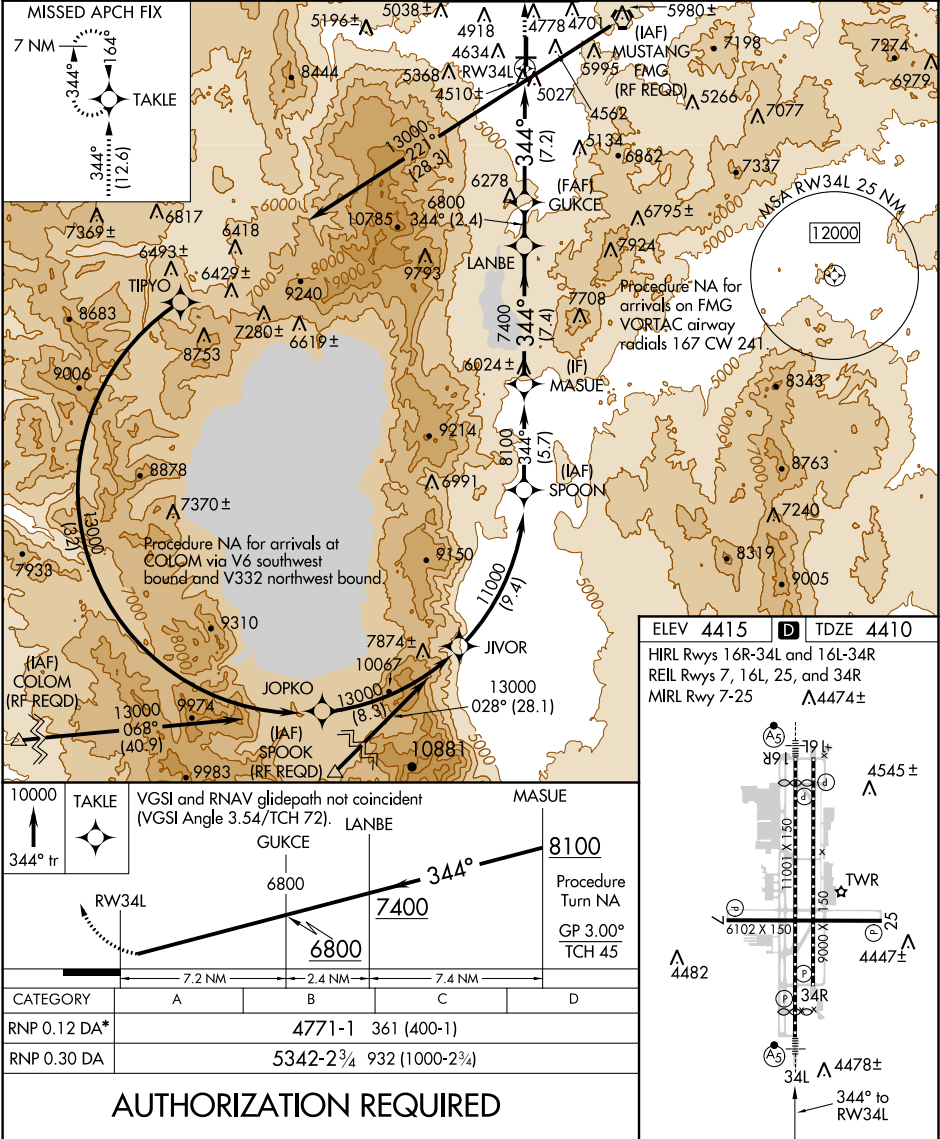
APP CRS	Rwy Idg	10011
344°	TDZE	4410
	Apt Elev	4415

RNAV (RNP) Z RWY 34L

RENO/TAHOE INTL (RNO)

<div><div>GPS required. For uncompensated Baro-VNAV systems, procedure NA below -13°C (8°F) or above 40°C (104°F). For inoperative MALSR increase visibility RNP 0.12 to 1¼ mile and RNP 0.30 to 4 miles.</div><div>*Missed approach requires minimum climb of 243 feet per NM to 7200.</div></div>	<div>MALSR</div> <div></div>	<div>MISSED APPROACH: Climb to 10000 via 344° track to TAKLE and hold, continue climb-in-hold to 10000.</div>
---	------------------------------	---

D-ATIS	NORCAL APP CON			RENO TOWER		GND CON		CLNC DEL		CPDLC
135.8 363.0	119.2	279.55	126.3 353.9	118.7	257.8	121.9	348.6	124.9	370.85	



SW-4, 03 DEC 2020 to 31 DEC 2020

SW-4, 03 DEC 2020 to 31 DEC 2020