

APP CRS	Rwy Idg	9000
344°	TDZE	4408
	Apt Elev	4415

RNAV (RNP) Z RWY 34R

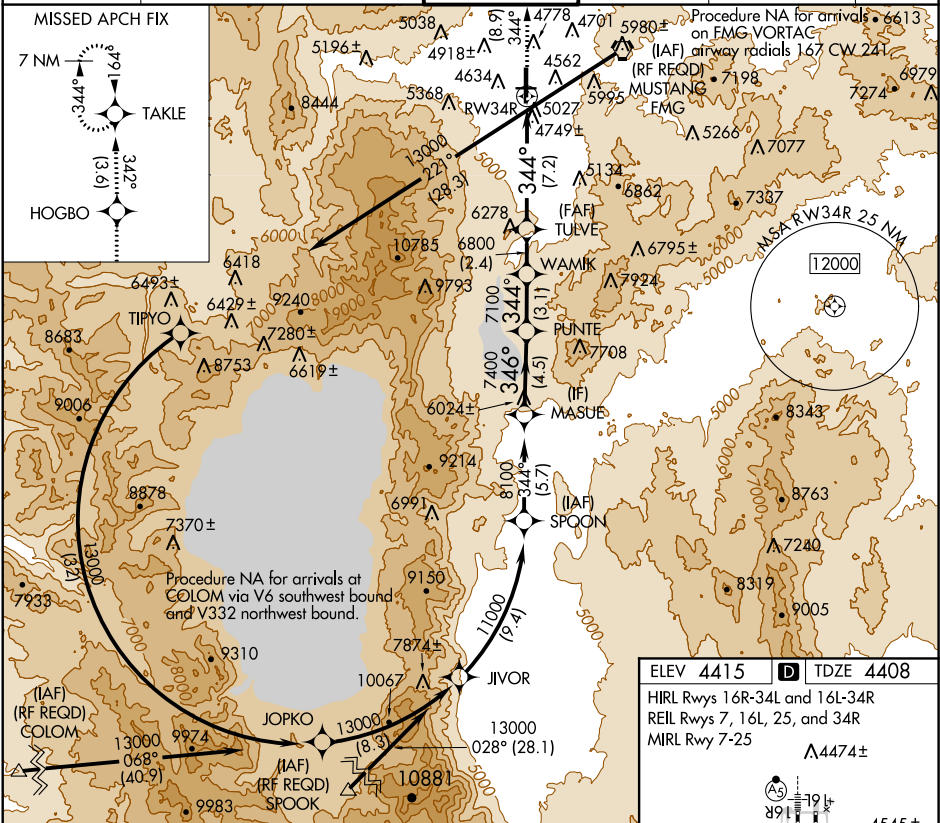
RENO/TAHOE INTL (RNO)

NA
-15°C

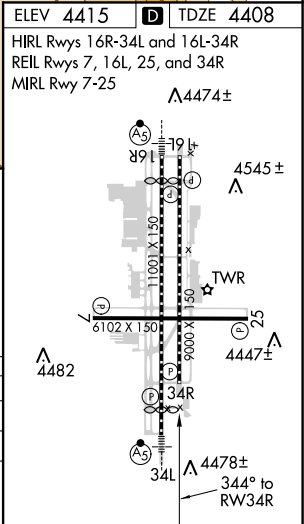
GPS required. For uncompensated Baro-VNAV systems, procedure NA below -13°C (8°F) or above 40°C (105°F).

MISSED APPROACH: Climb to 10000 via 344° track to HOGBO and 342° track to TAKLE and hold, continue climb-in-hold to 10000.

D-ATIS	NORCAL APP CON	RENO TOWER	GND CON	CLNC DEL	CPDLC
135.8 363.0	119.2 279.55 126.3 353.9	118.7 257.8	121.9 348.6	124.9 370.85	



10000	HOGBO	342° tr	TAKLE	342° tr
344° tr				
RW34R				
7.2 NM 2.4 NM 3.1 NM 4.5 NM				
CATEGORY	A	B	C	D
RNP 0.15 DA	5173-2¾ 765 (800-2¾)			
RNP 0.30 DA	5344-4 936 (1000-4)			



AUTHORIZATION REQUIRED

SW-4, 03 DEC 2020 to 31 DEC 2020

SW-4, 03 DEC 2020 to 31 DEC 2020