

RENO, NEVADA


AL-346 (FAA)

20086

WAAS CH <b>72909</b> <b>W16A</b>	APP CRS <b>164°</b>	Rwy Idg <b>9000</b> TDZE <b>4415</b> Apt Elev <b>4415</b>
--	------------------------	---

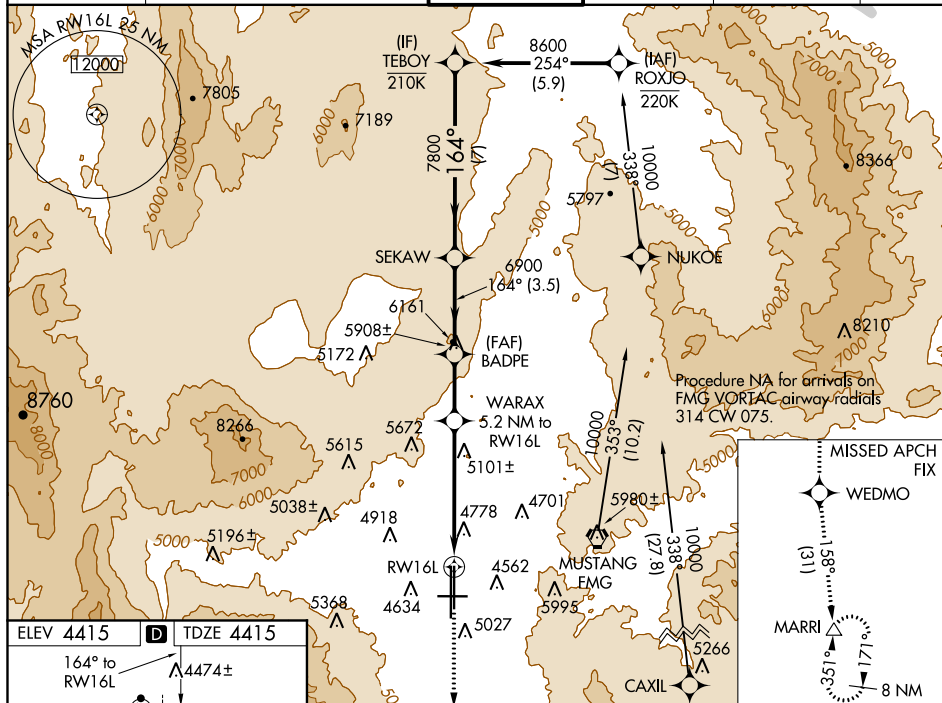
RNAV (GPS) X RWY 16L  
RENO/TAHOE INTL (RNO)

RNP APCH.

 Circling Rwy 7 NA at night. Rwy 16L helicopter visibility reduction below  $\frac{3}{4}$  SM NA. For uncompensated Baro-VNAV systems, LNAV/VNAV NA below -9°C or above 54°C.

**MISSED APPROACH:** Climb to 13000 direct WEDMO and on track 158° to MARRI and hold.

D-ATIS 135.8 363.0	NORCAL APP CON 119.2 279.55 126.3 353.9	RENO TOWER 118.7 257.8	GND CON 121.9 348.6	CLNC DEL 124.9 370.85	CPDLC
-----------------------	--	---------------------------	------------------------	--------------------------	-------



MIRL Rwy 7-25  
REIL Rwys 7, 16L, 25, and 34R  
HIRL Rwys 16R-34L and 16L-34R

VGSI and RNAV glidepath not coincident (VGSI Angle 3.00/TCH 75).					13000 ↑		WEDMO ✦		tr 158°		MARRI △	
<p>TEBOY 8600 164° 7800 6900 6140 5.2 NM to RW16L *2.7 NM to RW16L *LNNAV only. RW16L</p> <p>GP 3.00° TCH 55</p> <p>7 NM 3.5 NM 2.4 NM 2.5 NM 2.7 NM</p>												
CATEGORY		A		B		C				D		
LPV DA				5149-2		734 (800-2)						
LNNAV/ VNAV DA				5098-2		683 (700-2)						
LNNAV MDA		5360-1¼ 945 (1000-1¼)				5360-2½ 945 (1000-2½)						
<b>C</b> CIRCLING		5360-1¼ 945 (1000-1¼)				6460-3 2045 (2100-3)						

RENO, NEVADA  
Amdt 2 26MAR20

39°30'N-119°46'W

RENO/TAHOE INTL (RNO)

## RNAV (GPS) X RWY 16L

SW-4, 03 DEC 2020 to 31 DEC 2020

SW-4, 03 DEC 2020 to 31 DEC 2020