


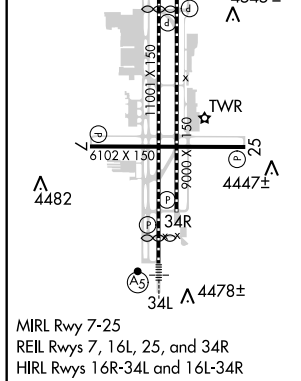
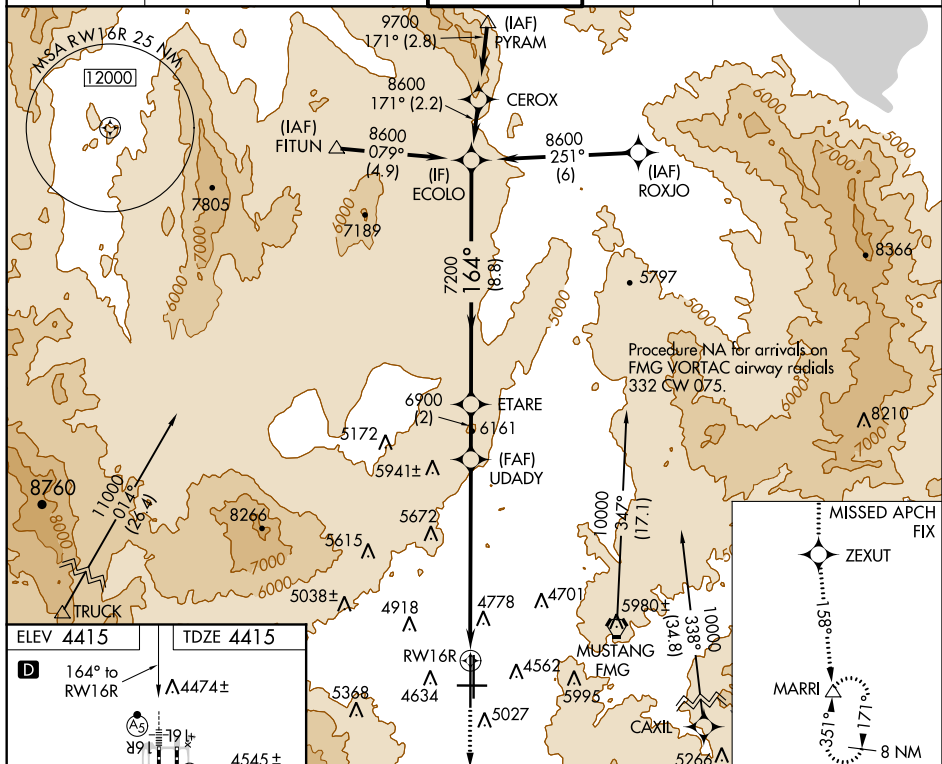


WAAS CH 78309 W16B	APP CRS 164°	Rwy Idg 10001 TDZE 4415 Apt Elev 4415
--	------------------------	--

RNAV (GPS) X RWY 16R
RENO/TAHOE INTL (RNO)

RNP APCH.					<div>MALSR</div> <div></div>		MISSED APPROACH: Climb to 13000 direct ZEXUT and on track 158° to MARRI and hold.				
<div><div></div><div>Inoperative table does not apply to LNAV all Cats. For inoperative MALSR increase LPV all Cats visibility to 2 1/4 .</div><div> -15°C</div></div>											
D-ATIS		NORCAL APP CON			RENO TOWER		GND CON		CLNC DEL		CPDLC
135.8 363.0		119.2 279.55 126.3 353.9			118.7 257.8		121.9 348.6		124.9 370.85		



VGSi and descent angles not coincident (VGSi Angle 3.06/TCH 77).				13000 	ZEXUT 	tr 158°	MARRI
CATEGORY	A		B	C		D	
LPV DA	5239-2¼ 824 (900-2¼)						
LNAV MDA	6200/60 1785 (1800-1¼)		6200-1½ 1785 (1800-1½)		6200-3 1785 (1800-3)		

RNAV (GPS) X RWY 16R