
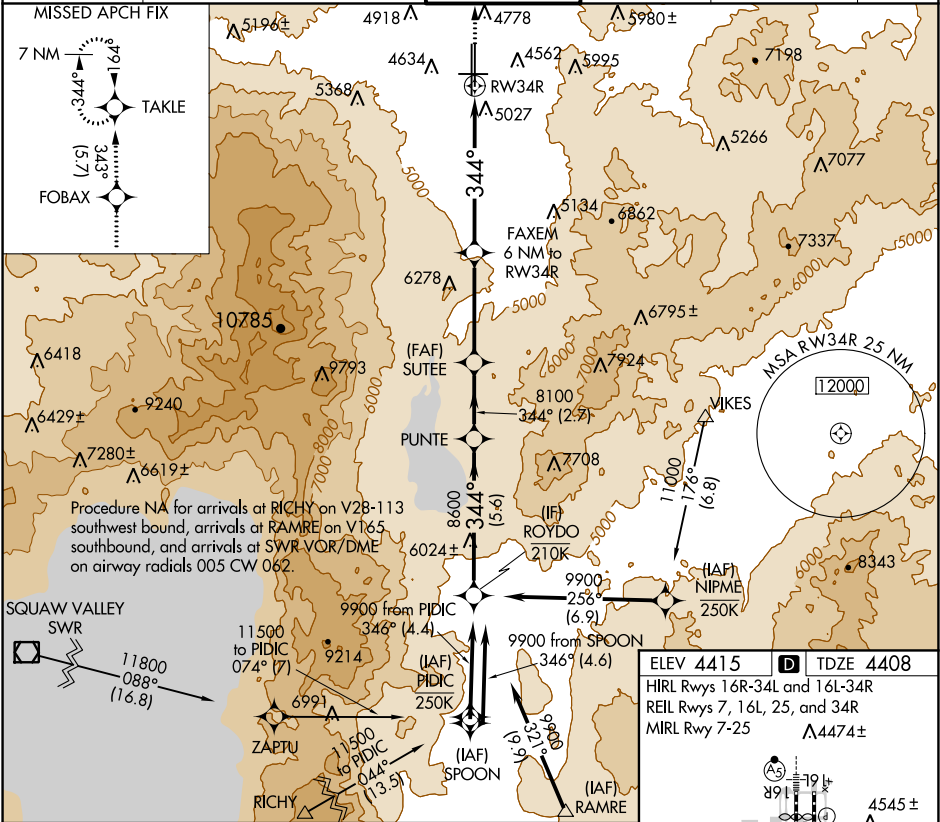




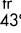

APP CRS <b>344°</b>	Rwy Idg TDZE Apt Elev	<b>9000</b> <b>4408</b> <b>4415</b>
------------------------	-----------------------------	---

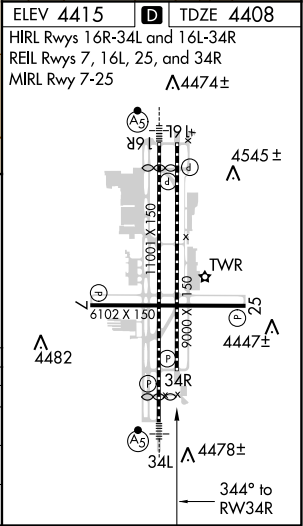
RNAV (GPS) X RWY 34R  
RENO/TAHOE INTL (RNO)

RNP APCH.	MISSED APPROACH: Climb to 11000 direct FOBAX and on track 343° to TAKLE and hold, continue climb-in-hold to 11000. # Missed approach requires minimum climb of 250 feet per NM to 5600.	
 Circling Rwy 7 NA at night. Rwy 34R helicopter visibility reduction below 3/4 SM NA. Baro-VNAV NA.		

D-ATIS <b>135.8 363.0</b>	NORCAL APP CON <b>119.2 279.55 126.3 353.9</b>	RENO TOWER <b>118.7 257.8</b>	GND CON <b>121.9 348.6</b>	CLNC DEL <b>124.9 370.85</b>	CPDLC
------------------------------	---	----------------------------------	-------------------------------	---------------------------------	-------



11000	FOBAX	tr 343°	TAKLE	*LNAV only.	PUNTE	ROYDO
						
*2.8 NM to RW34R		FAXEM 6 NM to RW34R		344°		
2.8 NM		3.2 NM		5.6 NM		
CATEGORY	A	B	C	D		
LNAV/VNAV DA	5471-4		1063 (1100-4)			
LNAV MDA #	5380-1 1/4 972 (1000-1 1/4)		5380-1 1/2 972 (1000-1 1/2)		5380-3 972 (1000-3)	
LNAV MDA	5500-1 1/4 1092 (1100-1 1/4)		5500-1 1/2 1092 (1100-1 1/2)		5500-3 1092 (1100-3)	
CIRCLING	5500-1 1/4 1085 (1100-1 1/4)		5500-1 1/2 1085 (1100-1 1/2)		6460-3 2045 (2100-3)	



SW-4, 03 DEC 2020 to 31 DEC 2020

SW-4, 03 DEC 2020 to 31 DEC 2020