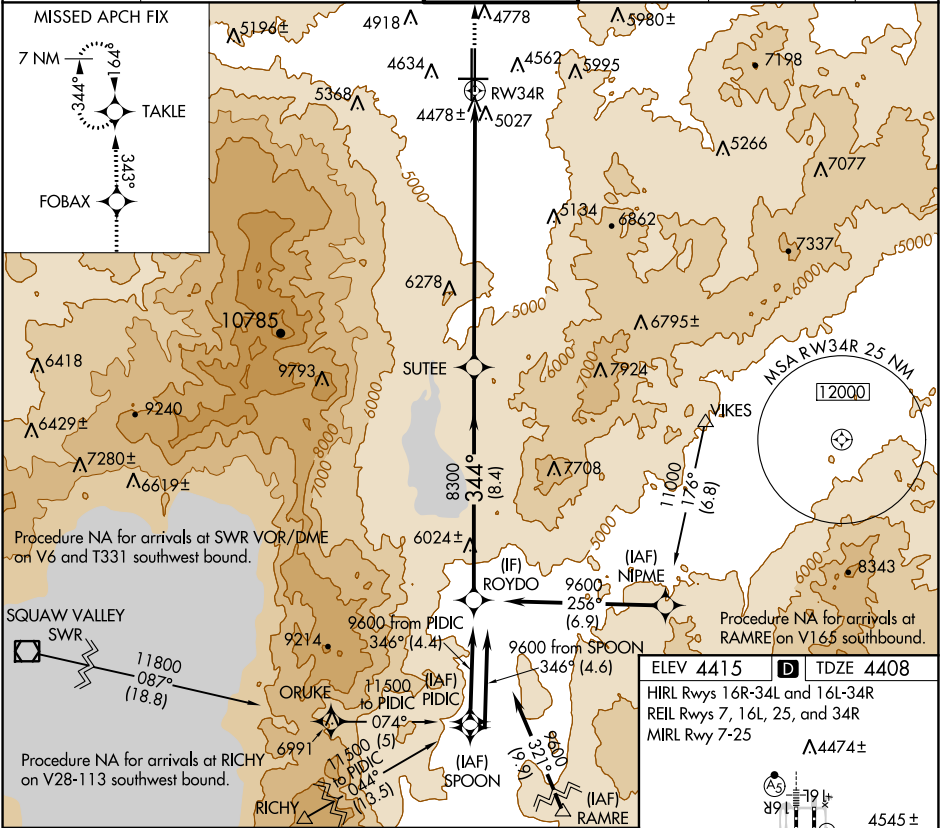


WAAS CH <b>40409</b> <b>W34B</b>	APP CRS <b>344°</b>	Rwy Idg <b>9000</b> TDZE <b>4408</b> Apt Elev <b>4415</b>
--	------------------------	---

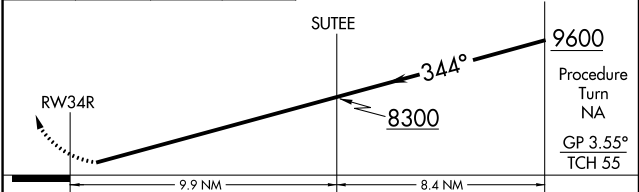
RNAV (GPS) Y RWY 34R  
RENO/TAHOE INTL (RNO)

<b>V</b> <b>34</b> -1.5°C DME/DME RNP- 0.3 NA.	MISSED APPROACH: Climb to 10000 direct FOBAX and via 343° track to TAKLE and hold, continue climb-in-hold to 10000.
--	---

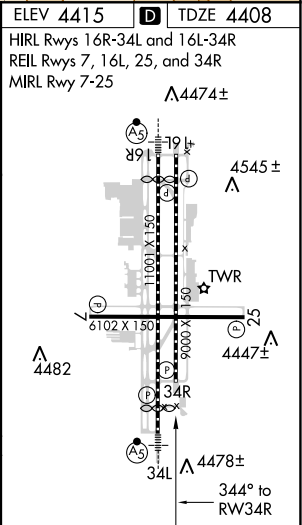
D-ATIS <b>135.8 363.0</b>	NORCAL APP CON <b>119.2 279.55 126.3 353.9</b>	<b>RENO TOWER</b> <b>118.7 257.8</b>	GND CON <b>121.9 348.6</b>	CLNC DEL <b>124.9 370.85</b>	CPDLC
------------------------------	---	---	-------------------------------	---------------------------------	-------



10000	FOBAX	343° tr	TAKLE	VGSI and RNAV glidepath not coincident (VGSI Angle 3.35/TCH 75).
-------	-------	---------	-------	--



CATEGORY	A	B	C	D
LPV DA	5043-2	635 (700-2)		NA



SW-4, 03 DEC 2020 to 31 DEC 2020

SW-4, 03 DEC 2020 to 31 DEC 2020