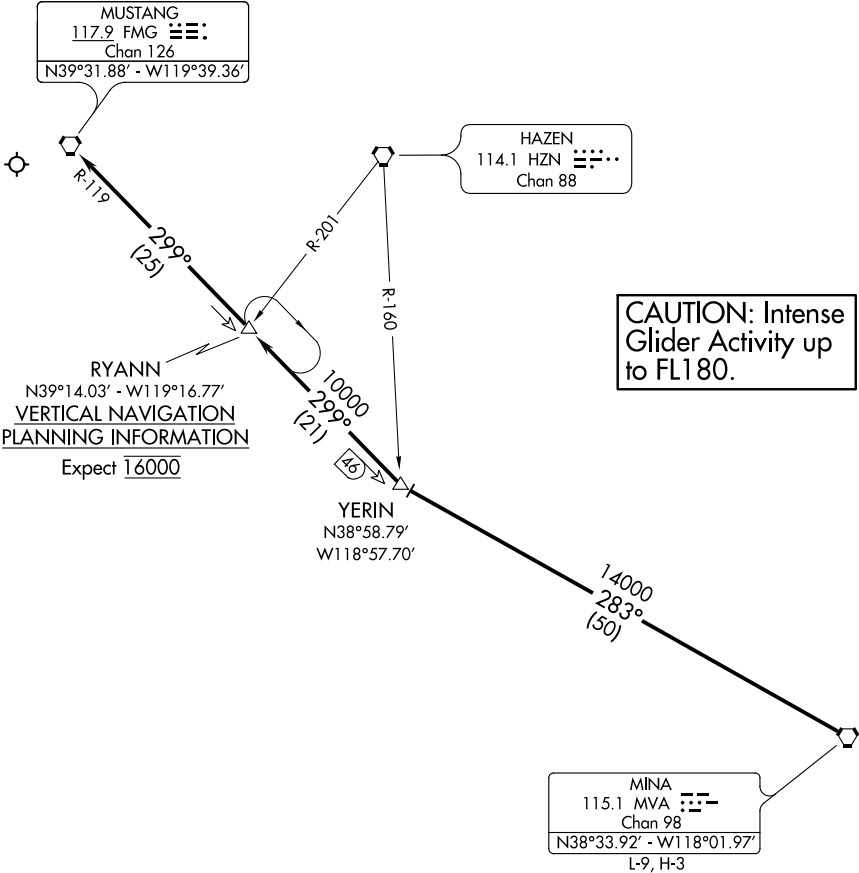


(MVA.RYANN1) 17173
RYANN ONE ARRIVAL

AL-346 (FAA)

RENO/TAHOE INTL (RNO)
RENO, NEVADA

NORCAL APP CON
119.2 279.55
126.3 353.9
D-ATIS
135.8 363.0



NOTE: For Runway 16 only.
NOTE: RADAR Required.
NOTE: Chart not to scale.

ARRIVAL ROUTE DESCRIPTION

RUNWAY 16: From over MVA VORTAC via MVA R-283 to YERIN INT. Thence via FMG R-119 to FMG VORTAC. Expect RADAR vectors to Runway 16.