

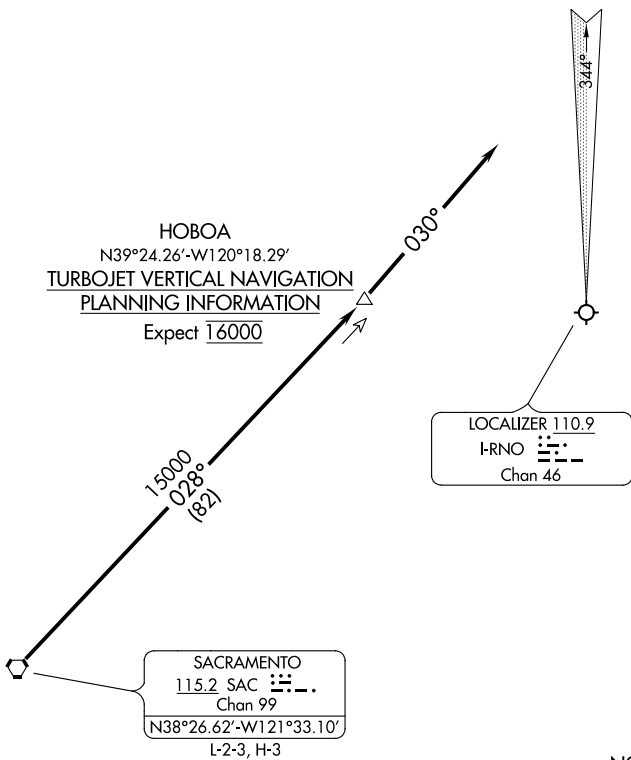
SIERRA THREE ARRIVAL

AL-346 (FAA)

RENO/TAHOE INTL (RNO)
RENO, NEVADA

NORCAL APP CON
119.2 279.55
126.3 353.9
D-ATIS
135.8 363.0

CAUTION: Intense
Glider Activity up
to FL180.



NOTE: RADAR required.
NOTE: DME required.
NOTE: Chart not to scale.

ARRIVAL ROUTE DESCRIPTION

From over SAC VORTAC via SAC R-028 to HOBIA INT/SAC 82 DME. Depart HOBIA heading 030° for vectors to final approach.

SIERRA THREE ARRIVAL

SW-4, 03 DEC 2020 to 31 DEC 2020

SW-4, 03 DEC 2020 to 31 DEC 2020