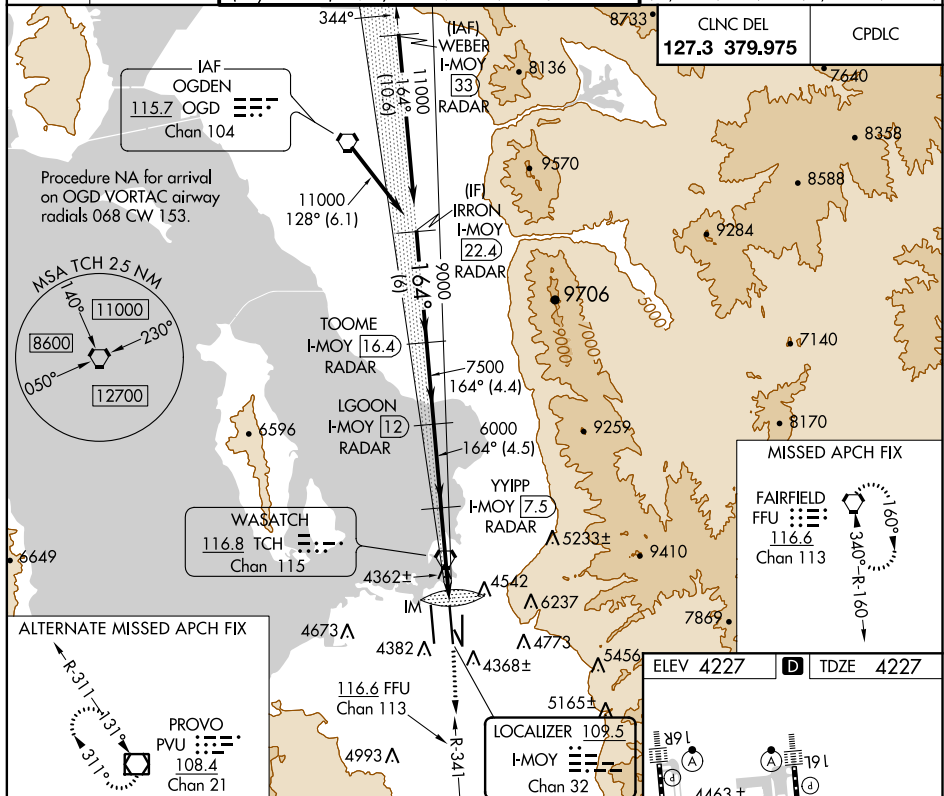


ILS RWY 16L (CAT II & III)  
SALT LAKE CITY INTL (SLC)

**MISSED APPROACH:** Climb to 4800 then climb to 10000 via FFU VORTAC R-341 to FFU VORTAC and hold.

CLNC DEL <b>127.3 379.975</b>	CPDLC
----------------------------------	-------



IRON  
I-MOY 22.4  
RADAR

TOOME  
I-MOY 16.4  
RADAR

IGOON  
I-MOY 12  
RADAR

YIYPP  
I-MOY 7.5  
RADAR

11000

164°

9000

7500

6000

6000

4328

IM

GS 3.00°  
TCH 55

6 NM

4.4 NM

4.5 NM

5.3 NM

1024'

CATEGORY

S-ILS 16L

S-ILS 16L

S-ILS 16L

S-ILS 16L

CAT II RA 108/12 100 DA 4327

CAT IIIa RVR 07

CAT IIIb RVR 03

CAT IIIc NA

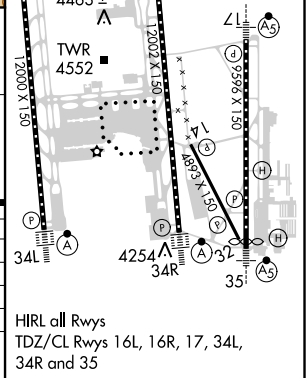
FFU

FFU R-341

4800

10000

**CATEGORY II & III ILS - SPECIAL AIRCREW  
& AIRCRAFT CERTIFICATION REQUIRED**



SW-4, 03 DEC 2020 to 31 DEC 2020