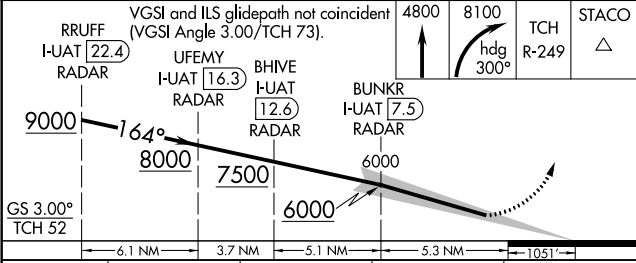
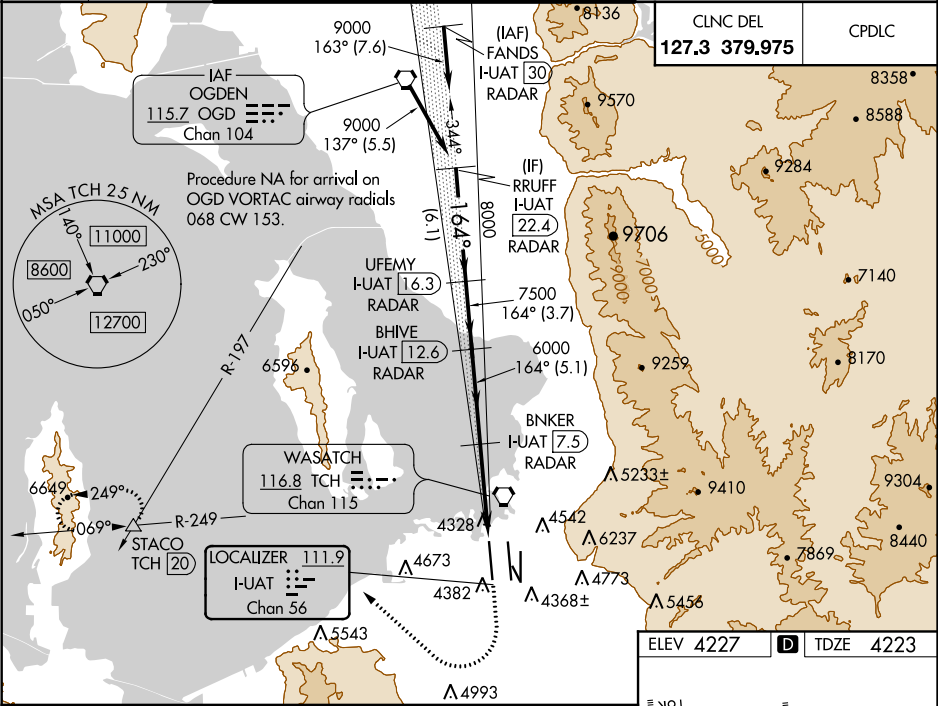


LOC/DME I-UAT 111.9 Chan 56	APP CRS 164°	Rwy ldg 12000 TDZE 4223 Apt Elev 4227	ILS RWY 16R (CAT II & III) SALT LAKE CITY INTL (SLC)
---	------------------------	--	--

DME or RADAR required.	ALSIF-2 	MISSED APPROACH: Climb to 4800 then climbing right turn to 8100 on heading 300° and on TCH VORTAC R-249 to STACO INT/TCH 20 DME and hold.
Simultaneous approach authorized. CAT II: RVR 1000 authorized with specific OPSPEC, MSPEC, or LOA approval and use of autoland or HUD to touchdown.		

D-ATIS 124.75 125.625	SALT LAKE CITY APP CON 125.7 284.6	SALT LAKE CITY TOWER 119.05 257.8 (Rwy 16L-34R)	118.3 257.8 (Rwys 14-32, 17-35)	132.65 336.4 (Rwy 16R-34L)	GND CON 121.9 348.6 (Rwys 14-32, 17-35)	123.775 348.6 (Rwys 16L-34R, 16R-34L)
---	--	--	---	--------------------------------------	--	---



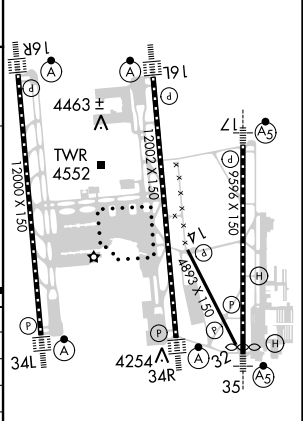
CATEGORY	A	B	C	D
S-ILS 16R	CAT II RA 108/12 100 DA 4323			
S-ILS 16R	Cat IIIa RVR 07			
S-ILS 16R	Cat IIIb RVR 03			
S-ILS 16R	Cat IIIc NA			

CATEGORY II & III ILS - SPECIAL AIRCREW & AIRCRAFT CERTIFICATION REQUIRED

CLNC DEL 127.3 379.975	CPDLC
----------------------------------	-------



ELEV 4227	D	TDZE 4223
-----------	---	-----------



HIRL all Rwys
TDZ/CL Rwys 16L, 16R, 17, 34L, 34R, and 35