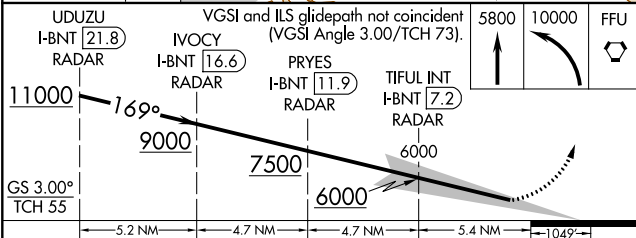
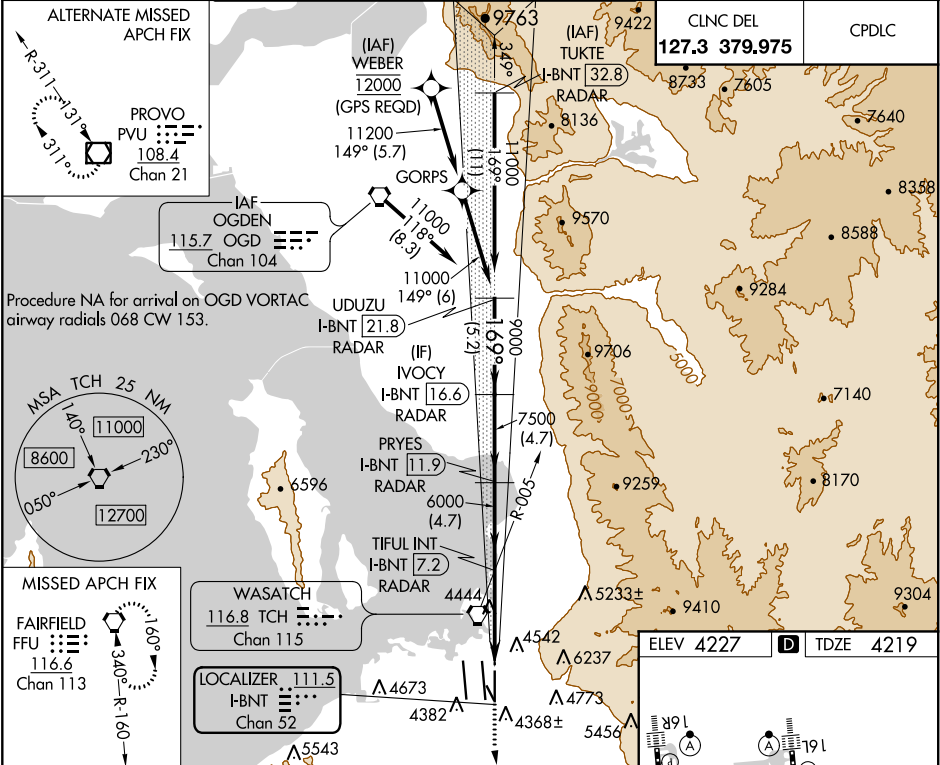


LOC/DME I-BNT	APP CRS	Rwy Idg	9597
111.5	169°	TDZE	4219
Chan 52		Apt Elev	4227

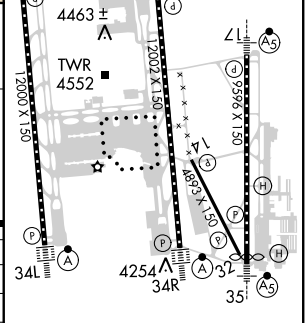
ILS RWY 17 (SA CAT I & II)
SALT LAKE CITY INTL (SLC)

<p>▼ DME or RADAR required. Simultaneous approach authorized. SA CAT I: Requires specific OPSPEC, MSPEC, or LOA approval and use of HUD to DH. SA CAT II: Reduced lighting: Requires specific OPSPEC, MSPEC, or LOA approval and use of autoland or HUD to touchdown.</p>	<p>MALSR</p>	<p>MISSED APPROACH: Climb to 5800 then climbing left turn to 10000 direct FFU VORTAC and hold.</p>
---	--------------	--

D-ATIS	SALT LAKE CITY APP CON	SALT LAKE CITY TOWER	GND CON
124.75	125.7 284.6	119.05 257.8 118.3 257.8 132.65 336.4	121.9 348.6 123.775 348.6
125.625		(Rwy 16L-34R) (Rwys 14-32, 17-35) (Rwy 16R-34L)	(Rwys 14-32, 17-35) (Rwys 16L-34R, 16R-34L)



CATEGORY	A	B	C	D
S-ILS 17	SA CAT I	RA 149/14	150	DA 4369
S-ILS 17	SA CAT II	RA 99/12	100	DA 4319



SA CATEGORY I & II ILS - SPECIAL AIRCREW & AIRCRAFT CERTIFICATION REQUIRED

HIRL all Rwys
TDZ/CL Rwys 16L, 16R, 17, 35, 34L, and 34R