

LOC/DME I-UUH 111.9 Chan 56	APP CRS 344°	Rwy Idg 12000 TDZE 4226 Apt Elev 4227
---	------------------------	--

ILS RWY 34L (CAT II & III)
SALT LAKE CITY INTL (SLC)

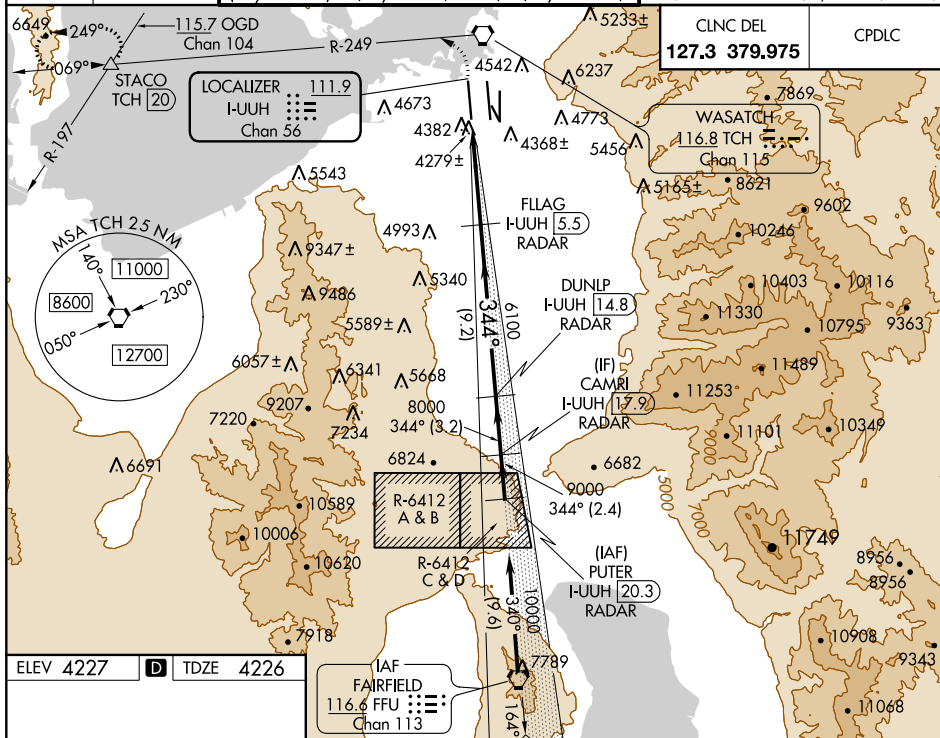
RADAR required for arrivals at PUTER. DME or RADAR required.

T Simultaneous approach authorized.
CAT II: RVR 1000 authorized with specific OPSPEC, MSPEC or LOA approval and use of autoland or HUD to touchdown.

ALSF-2

MISSED APPROACH: Climb to 4800 then climbing left turn to 8100 on TCH VORTAC R-249 to STACO INT/TCH 20 DME and hold.

D-ATIS	SALT LAKE CITY	SALT LAKE CITY TOWER			GND CON		
124.75	APP CON	119.05 257.8	118.3 257.8	132.65 336.4	121.9 348.6	123.775 348.6	
125.625	125.7 284.6	(Rwy 16L-34R)	(Rwys 14-32, 17-35)	(Rwy 16R-34L)	(Rwys 14-32, 17-35)	(Rwys 16L-34R, 16R-34L)	

[illegible]

	1051	5.7 NM	9.2 NM	3.2 NM	2.4 NM	
CATEGORY		A	B	C		D
S-ILS 34L		CAT II RA 102/12 100 DA 4326				
S-ILS 34L		CAT IIIa RVR 07				
S-ILS 34L		CAT IIIb RVR 03				
S-ILS 34L		CAT IIIc NA				

**CATEGORY II & III ILS - SPECIAL AIRCREW
& AIRCRAFT CERTIFICATION REQUIRED**