

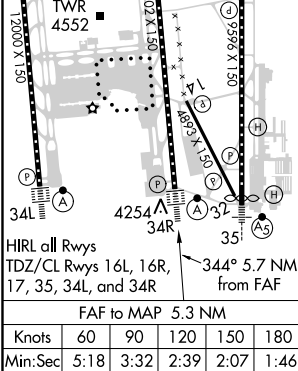
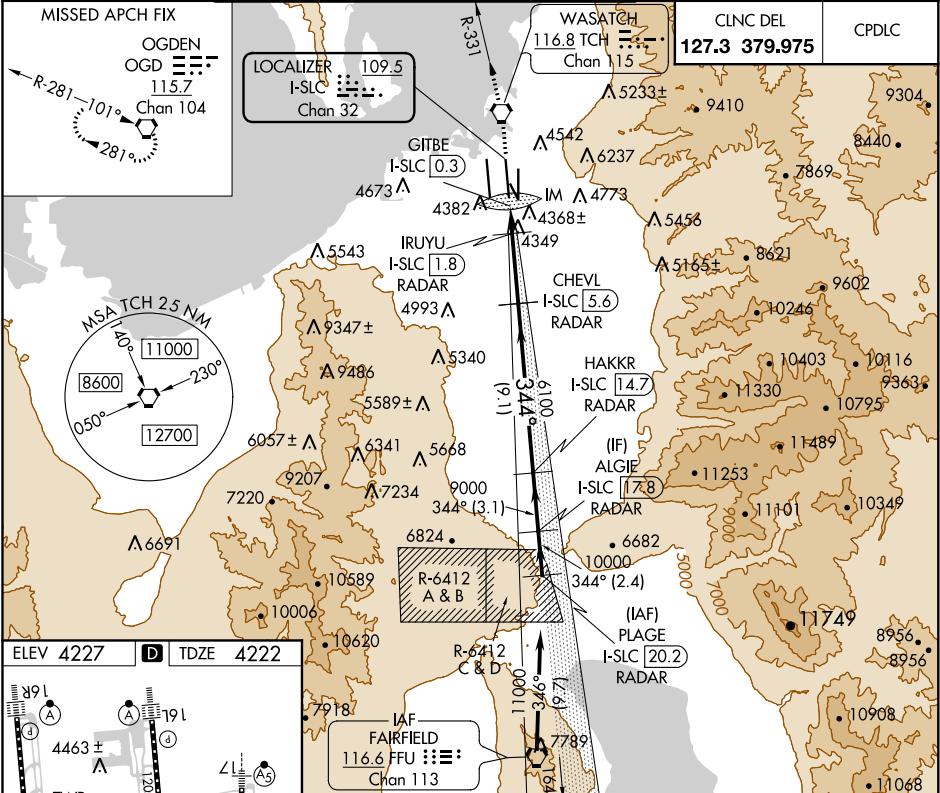
LOC/DME I-SLC	APP CRS	Rwy Idg	12002
109.5	344°	TDZE	4222
Chan 32		Apt Elev	4227

# ILS or LOC RWY 34R

SALT LAKE CITY INTL (SLC)

DME or RADAR Required.		ALSF-2	MISSED APPROACH: Climb to 9000 direct TCH VORTAC and on TCH VORTAC R-331 to OGD VORTAC and hold.
Simultaneous approach authorized.			

D-ATIS	SALT LAKE CITY APP CON	SALT LAKE CITY TOWER	GND CON
124.75	125.7 284.6	119.05 257.8 (Rwy 16L-34R) 118.3 257.8 (Rwys 14-32, 17-35) 132.65 336.4 (Rwy 16R-34L)	121.9 348.6 (Rwys 14-32, 17-35) 123.775 348.6 (Rwys 16L-34R, 16R-34L)



ELEV 4227		TDZE 4222	VGS and ILS glidepath not coincident (VGS Angle 3.00/TCH 73).		PLAGE I-SLC [20.2] RADAR
TCH R-331		OGD	*LOC only		HAOKR I-SLC [14.7] RADAR
I-SLC DME ANT.		*I-SLC	IRUYU I-SLC [5.6] RADAR		CHEVL I-SLC [5.6] RADAR
GITBE I-SLC [0.3]		I-SLC	ALGIE I-SLC [17.8] RADAR		HAOKR I-SLC [14.7] RADAR
IM		6100	344° 11000		9000 10000
4900*		6100	GS 3.00° TCH 53		
CATEGORY A		B	C		D
S-ILS 34R		4422/18	200 (200-1/2)		
S-LOC 34R		4700/24	478 (500-1/2)		