

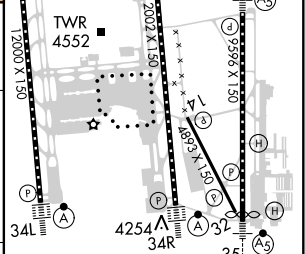
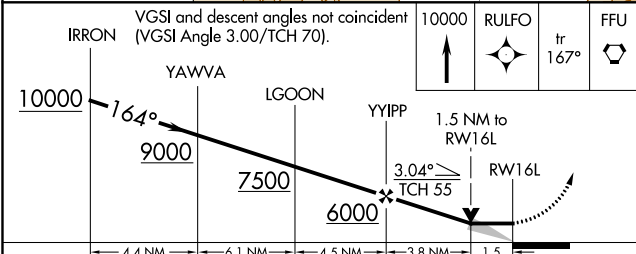
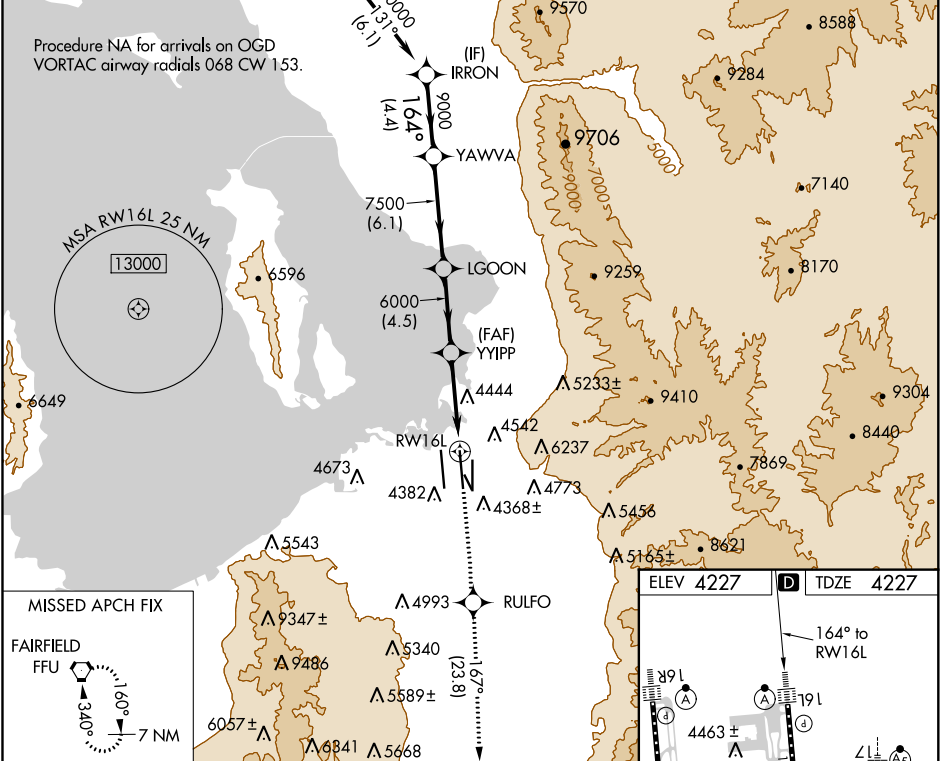
APP CRS	Rwy Idg	12002
164°	TDZE	4227
	Apt Elev	4227

RNAV (GPS) RWY 16L
SALT LAKE CITY INTL (SLC)

 DME/DME RNP- 0.3 NA. For inop ALS, increase LNAV Cat E visibility to 2 SM.		MISSED APPROACH: Climb to 10000 direct RULFO and on track 167° to FFU VORTAC and hold.
---	---	--

D-ATIS 124.75 125.625	SALT LAKE CITY APP CON 125.7 284.6	SALT LAKE CITY TOWER 119.05 257.8 (Rwys 16L-34R)	118.3 257.8 (Rwys 14-32, 17-35)	132.65 336.4 (Rwy 16R-34L)	GND CON 121.9 348.6 (Rwys 14-32, 17-35)	123.775 348.6 (Rwys 16L-34R, 16R-34L)
---	---	---	---	--------------------------------------	--	---

(IAF) OGDEN OGD	CLNC DEL 127.3 379.975	CPDLC
-----------------------	----------------------------------	-------



CATEGORY	A	B	C	D	E
LNAV MDA	4760/24	533 (600-1/2)	4760/50	4760/60	4760-1 1/2
			533 (600-1)	533 (600-1 1/4)	533 (600-1 1/2)

SW-4, 03 DEC 2020 to 31 DEC 2020

SW-4, 03 DEC 2020 to 31 DEC 2020