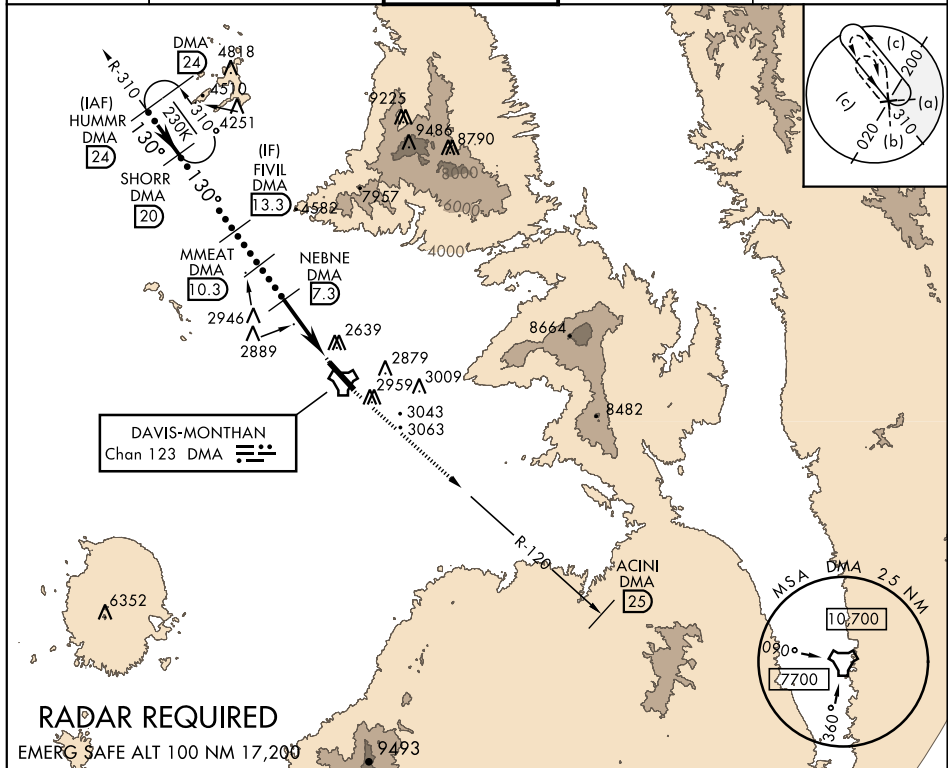


HI-TACAN Z RWY 12

ATIS ★ 270.1	TUCSON APP CON 125.1 269.55 (090° - 285°) 119.4 318.1 (286° - 089°)	DAVIS-MONTHAN TOWER 118.85 253.5	GND CON 121.8 275.8	CLNC DEL 121.8 275.8
-----------------	---	--	------------------------	-------------------------



The diagram illustrates the TCH 58 instrument landing system approach path. It begins at a distance of 12,000 feet from the runway threshold, where the Hummer R-310 (R-24) is located. The initial segment is a 130° turn. Key waypoints along the path include FIVIL (13.3), MMEAT (10.3), NEBNE (7.3), and ESALE (2.2). The vertical profile shows altitudes of 5500, 5000, and 4600 feet. A 3.17° glide slope is indicated. The final segment is a 0.7 NM straight-in approach to the runway threshold, which is 5.1 NM from the previous waypoint. The runway is labeled TACAN. To the right, a detailed view of the runway area shows the TWR (Tower) at 2742 feet, the runway end at 2711 feet, and the runway width of 130 feet. The runway is oriented 130° to TACAN. The runway is labeled TCH 58.

TUCSON, ARIZONA
Amdt 8 28MAR19

32°10'N-110°53'W

DAVIS-MONTHAN AFB (KDMA)

HI-TACAN Z RWY 12