

LOC/DME I-TUS 111.7 Chan 54	APP CRS 123°	Rwy Idg TDZE 2599 Apt Elev 2643
---	------------------------	---

ILS or LOC RWY 11L
TUCSON INTL (TUS)

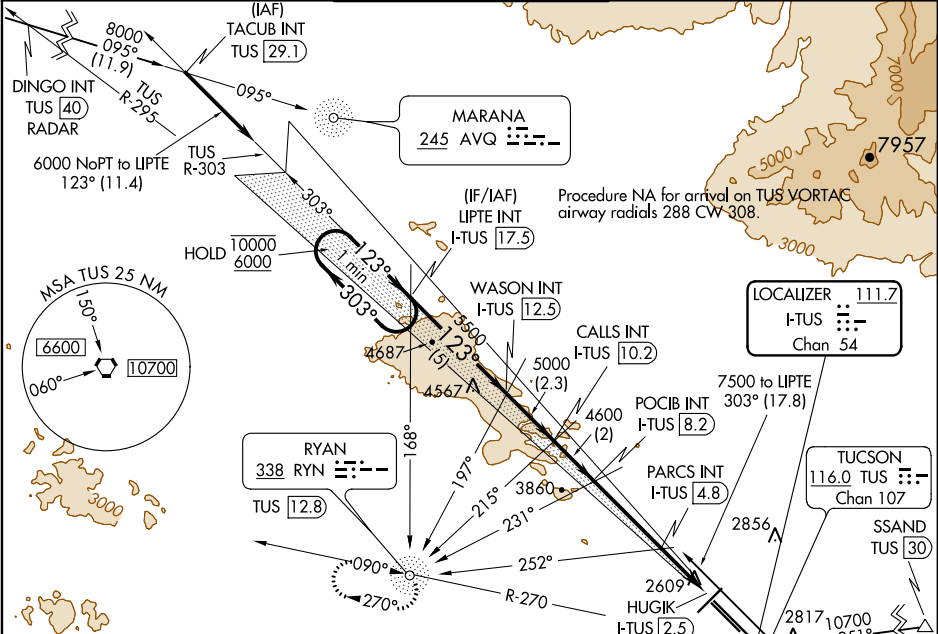
ADF or RADAR required for arrivals at DINGO.
ADF or DME required.
DME required for arrivals at SSAND.

MALSR
(AS)

MISSED APPROACH: Climb to 4000 then climbing right turn to 6000 on heading 300° and TUS VORTAC R-270 to RYN NDB/TUS 12.8 DME and hold.

For inop ALS, increase S-ILS Cat E visibility to RVR 4000, S-LOC 11L Cat E visibility to 2½ SM; PARCS FIX MINIMUMS: S-LOC 11L Cat C/D/E visibility to RVR 5500.

ATIS 123.8 279.65	TUCSON APP CON 119.4 318.1	TUCSON TOWER 118.3 257.8	GND CON 124.4 348.6	CLNC DEL 126.65 326.2
-----------------------------	--------------------------------------	------------------------------------	-------------------------------	---------------------------------



Use I-TUS DME when on the localizer course.

One Minute Holding Pattern

LIPT INT I-TUS 17.5

WASON INT I-TUS 12.5

CALLS INT I-TUS 10.2

POCIB INT I-TUS 8.2

PARCS INT I-TUS 4.8

HUGIK I-TUS 2.5

RYN 338 RYN TUS 12.8

ELEV 2643 TDZE 2599

CATEGORY	A	B	C	D	E
S-ILS 11L	2800/24 201 (200-½)				
S-LOC 11L	3480/40	881 (900-¾)	3480-2	881 (900-2)	
CIRCLING	3480-1 ¼	837 (900-1 ¼)	3480-2 ½	3480-2 ¾	3800-3
			837 (900-2 ½)	837 (900-2 ¾)	1157 (1200-3)
PARCS FIX MINIMUMS					
S-LOC 11L	2960/24	361 (400-½)	2960/40	361 (400-¾)	
CIRCLING	3160-1	3220-1	3220-1 ½	3220-2	3800-3
	517 (600-1)	577 (600-1)	577 (600-1 ½)	577 (600-2)	1157 (1200-3)

HIRL Rwy 11L-29R
MIRL Rwy 3-21 and 11R-29L
REIL Rwy 21, 29L and 29R

FAF to MAP 5.7 NM

Knots	60	90	120	150	180
Min:Sec	5:42	3:48	2:51	2:17	1:54

SW-4, 03 DEC 2020 to 31 DEC 2020

SW-4, 03 DEC 2020 to 31 DEC 2020