

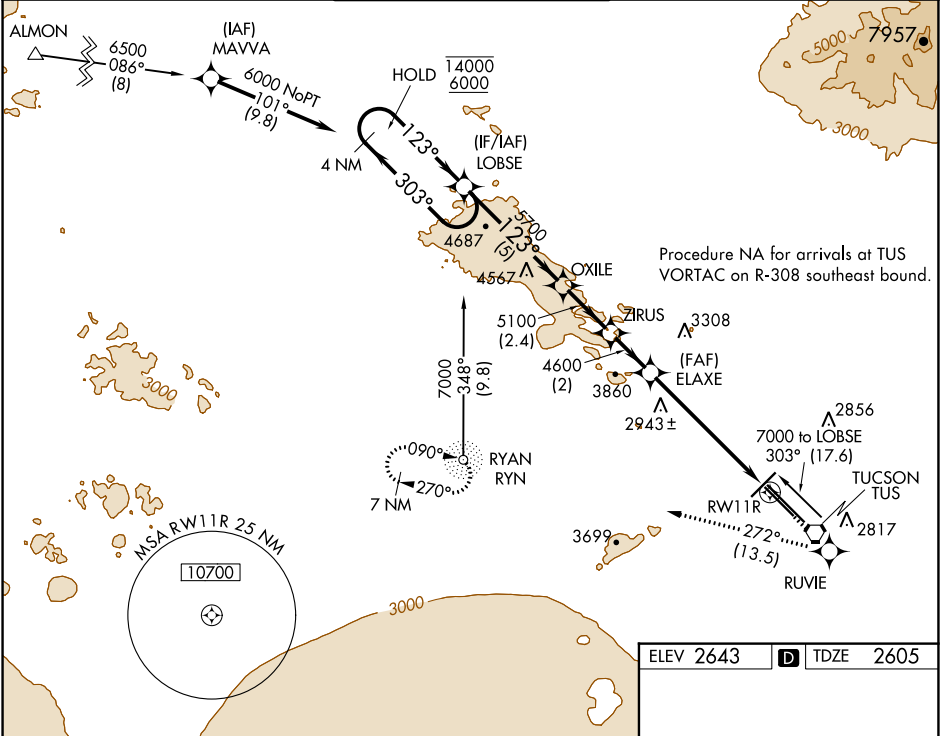
APP CRS	Rwy Idg	6998
123°	TDZE	2605
	Apt Elev	2643

RNAV (GPS) RWY 11R

TUCSON INTL (TUS)

RNP APCH.	MISSED APPROACH: Climb to 6000 direct RUVIE and on track 272° to RYN NDB and hold.
For uncompensated Baro-VNAV systems, LNAV/VNAV NA below -20°C or above 54°C.	

ATIS	TUCSON APP CON	TUCSON TOWER	GND CON	CLNC DEL
123.8 279.65	119.4 318.1	118.3 257.8	124.4 348.6	126.65 326.2



VGSI and RNAV glidepath not coincident (VGSI Angle 3.00/TCH 45).				
Holding Pattern				
14000 ← 303° 6000 ← 123°				
GP 3.00° TCH 55				
5 NM 2.4 NM 2 NM 4.3 NM 1.8 NM				
CATEGORY	A	B	C	D
LNAV/VNAV DA	2965-1¼		360 (400-1¼)	
LNAV MDA	3200-1 595 (600-1)		3200-1¾ 595 (600-1¾)	
CIRCLING	3200-1 557 (600-1)	3220-1 577 (600-1)	3220-1¾ 577 (600-1¾)	3220-2 577 (600-2)

