

APP CRS
303°

Rwy Idg
10996

TDZE
2643

Apt Elev
2643

RNAV (RNP) Y RWY 29R

TUCSON INTL (TUS)

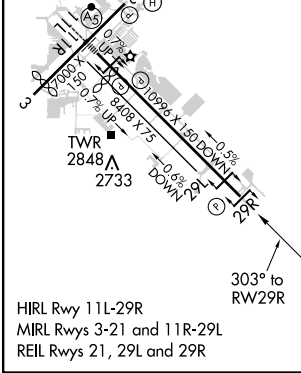
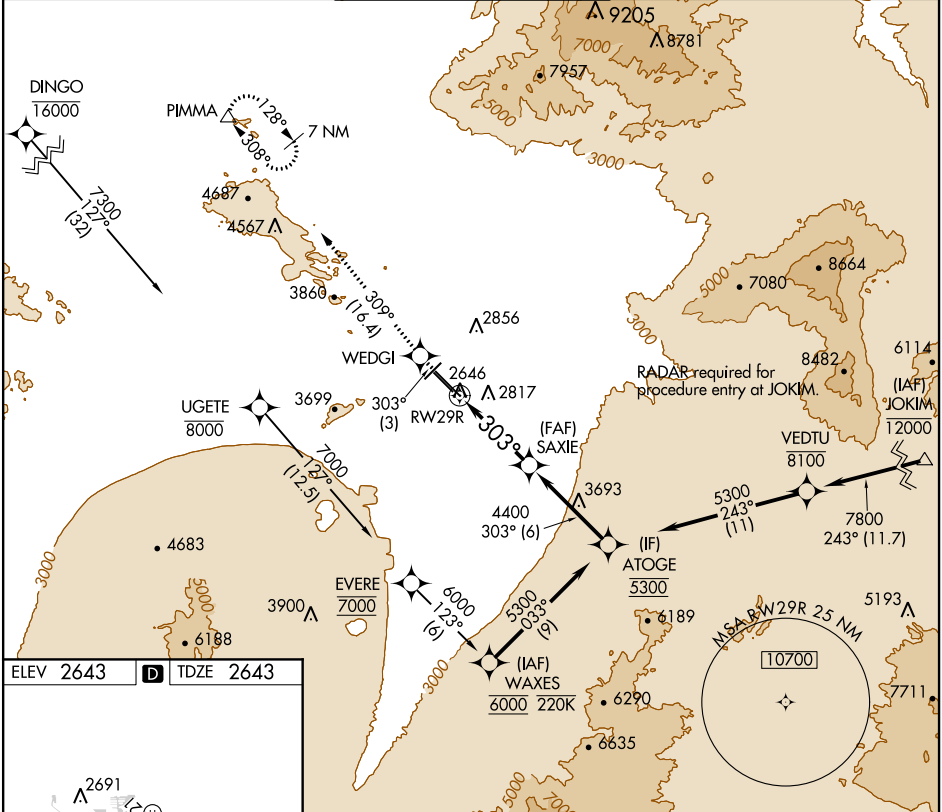
▼

NA

When VGSI inop, procedure NA at night. GPS required. For uncompensated Baro-VNAV systems, procedure NA below -5°C (23°F) or above 43°C (110°F). Rwy 29R helicopter visibility reduction below ¼ SM NA.

MISSED APPROACH: Climb to 6500 on 303° track to WEDGI 309° track to PIMMA and hold.

| | | | | |
|----------------------|-------------------------------|-----------------------------|------------------------|--------------------------|
| ATIS 123.8 279.65 | TUCSON APP CON 119.4 318.1 | TUCSON TOWER 118.3 257.8 | GND CON 124.4 348.6 | CLNC DEL 126.65 326.2 |
|----------------------|-------------------------------|-----------------------------|------------------------|--------------------------|



6500 WEDGI 303° tr

309° tr PIMMA

VGSI and RNAV glidepath not coincident (VGSI Angle 3.00/TCH 81).

ATOGE Procedure Turn NA

SAXIE 4400

ATOGE 5300

GP 3.00° TCH 53

5.3 NM 6 NM

CATEGORY A B C D

RNP 0.30 DA 3137-1½ 494 (500-1½)

AUTHORIZATION REQUIRED