

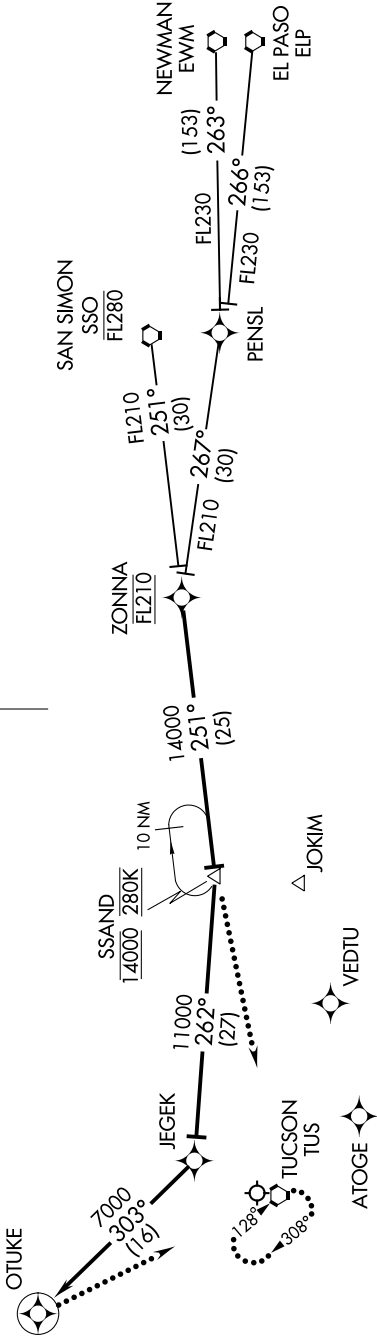
ZONNA ONE ARRIVAL (RNAV)

AL-430 (FAA)

TUCSON INTL (TUS)
TUCSON, ARIZONA

SW-4, 03 DEC 2020 to 31 DEC 2020

ATIS 123.8 279.65
TUCSON APP CON
119.4 318.1
TUCSON TOWER
118.3 257.8
GND CON 124.4 348.6



ARRIVAL ROUTE DESCRIPTION

EL PASO TRANSITION (ELP.ZONNA1)
NEWMAN TRANSITION (EWM.ZONNA1)
SAN SIMON TRANSITION (SSO.ZONNA1)

From ZONNA via 251° track to SSAND, cross SSAND at 14000 and 280K, then via 262° track to JEGEK, then via 303° track to OTUKE. Expect radar vectors to final approach course.

LOSS COMMUNICATIONS

RWY 29R: At SSAND proceed direct TUS VORTAC and hold, maintain 14000.
RWY 11L: Execute RNAV (GPS) Z RWY 11L approach. If unable, at OTUKE proceed direct TUS VORTAC and hold, maintain 14000.

NOTE: RADAR required.
NOTE: All Rwy's: expect radar vectors to final approach.
NOTE: RNAV 1.
NOTE: DME/DME/IRU, or GPS required.
NOTE: For turbojets only.
NOTE: All transitions: for non-GPS equipped aircraft DUG, TFD, and TUS must be operational.
NOTE: Landing Rwy 29: Expect radar vectors after SSAND to final approach course.

NOTE: Chart not to scale.

ZONNA ONE ARRIVAL (RNAV)

(ZONNA.ZONNA1) 30AUG07

TUCSON, ARIZONA
TUCSON INTL (TUS)

SW-4, 03 DEC 2020 to 31 DEC 2020