

YUMA, ARIZONA

RNAV (GPS) RWY 17

APCH CRS	Rwy Idg	5710
170°	TDZE	197
	Arpt Elev	213

AL-511 (USN)

YUMA MCAS YUMA INTL (KNYL)



MISSED APPROACH: Climb to 800 then, climbing right turn to 4000 direct CAZZI and hold. Continue climb in hold to 4000.

ATIS★
118.8 27

ASOS
256.4

APP CON
124.7 371.975

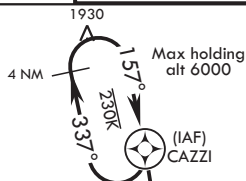
TOWER★
119.3 (CTAF) 0 377 075

GND CON
121.9 314.0

CLNC DEL
118.0 336.4

ASR/PAR

DME/DME RNP-0.3 NA



2054

1533

2139

472

R2306E

R230

160-196

(FAF)
BARD.

493 A

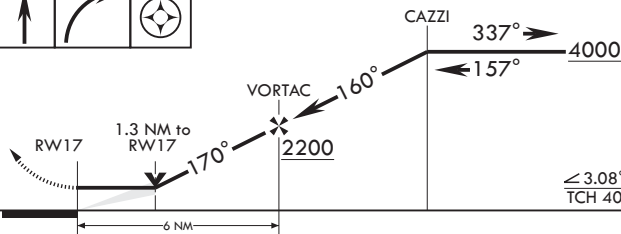
RW 1


51

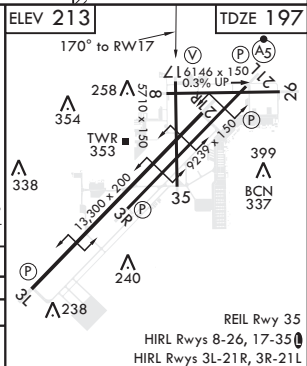
4

A 479

EMERG SAFE ALT 100 NM 17,100



CATEGORY	A		B		C		D	
LNAV MDA	640-1	443	(500-1)		640-1 ³ / ₈	443	(500-1 ³ / ₈)	
 CIRCLING	680-1 467 (500-1)		700-1 487 (500-1)		800-1 ¹ / ₂ 587 (600-1 ¹ / ₂)		800-2 587 (600-2)	



YUMA, ARIZONA

32°39'N - 114°36'W

YUMA MCAS YUMA INTL (KNYL)

RNAV (GPS) RWY 17

Amdt 4 20JUN19

SW-4, 03 DEC 2020 to 31 DEC 2020

SW-4, 03 DEC 2020 to 31 DEC 2020