


YUMA, ARIZONA

RNAV (GPS) RWY 3L

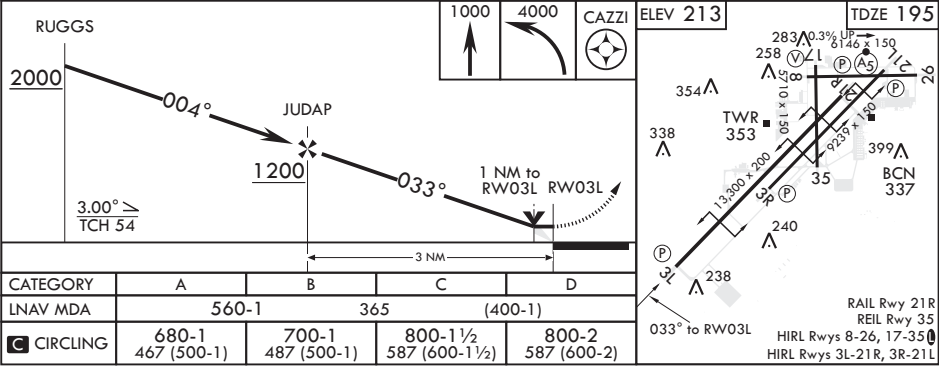
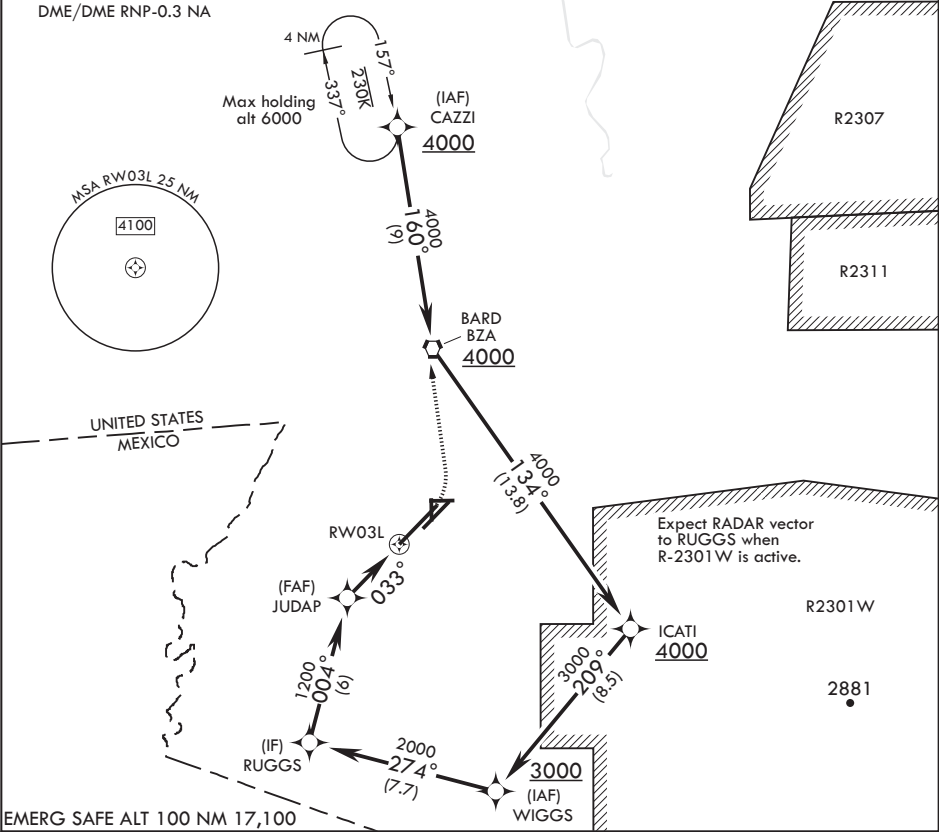
APCH CRS	Rwy Idg	13,300
033°	TDZE	195
	Arprt Elev	213

AL-511 (USN)

YUMA MCAS YUMA INTL (KNYL)

	MISSED APPROACH: Climb to 1000, then climbing left turn to 4000 direct CAZZI and hold. Continue climb in hold to 4000.
---	---

ATIS★ 118.8 273.5	ASOS 256.4	APP CON 124.7 371.975	TOWER★ 119.3 (CTAF)  377.075	GND CON 121.9 314.0	CLNC DEL 118.0 336.4	ASR/PAR
----------------------	---------------	--------------------------	--	------------------------	-------------------------	---------



YUMA, ARIZONA

32°39'N - 114°36'W

YUMA MCAS YUMA INTL (KNYL)

Amdt 3 24MAY18

RNAV (GPS) RWY 3L

SW-4, 03 DEC 2020 to 31 DEC 2020

SW-4, 03 DEC 2020 to 31 DEC 2020