


YUMA, ARIZONA

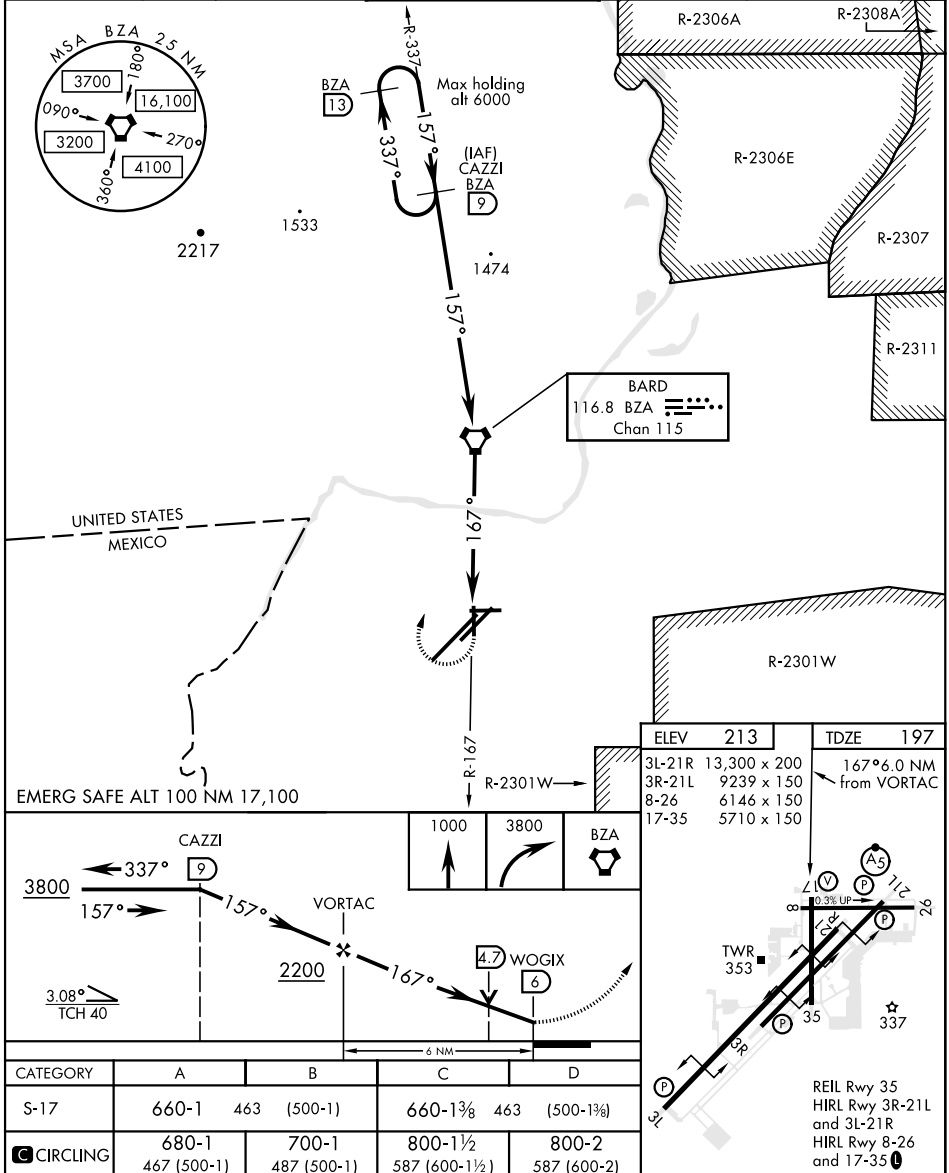
VOR/DME or TACAN RWY 17

VORTAC BZA <b>116.8</b> Chan <b>115</b>	APCH CRS <b>167°</b>	Rwy Idg TDZE Arpt Elev <b>5710</b> <b>197</b> <b>213</b>
---	-------------------------	---

AL-511 [USN]

YUMA MCAS/YUMA INTL (KNYL)

			MISSED APPROACH: Climb to 1000, then climbing right turn to 3800 direct BZA VORTAC and BZA R-337 to CAZZI and hold.			
ATIS★ 118.8 273.5	ASOS 256.4	YUMA APP CON 124.7 371.975	YUMA TOWER★ 119.3 (CTAF) 0 377.075	GND CON 121.9 314.0	CLNC DEL 118.0 336.4	ASR/ PAR



YUMA, ARIZONA

32°39'N-114°36'W

YUMA MCAS/YUMA INTL (KNYL)

Amdt 4 24MAY18

VOR/DME or TACAN RWY 17