

WAAS CH 60920 W32A	APP CRS 318°	Rwy Idg TDZE Apt Elev	7800 5045 5050
--	------------------------	-----------------------------	---

RNAV (GPS) RWY 32

RENO/STEAD (RTS)

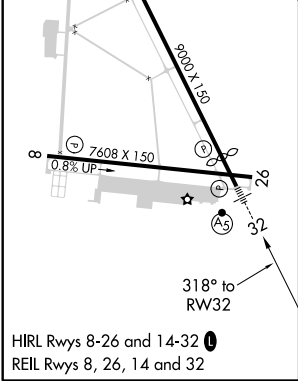
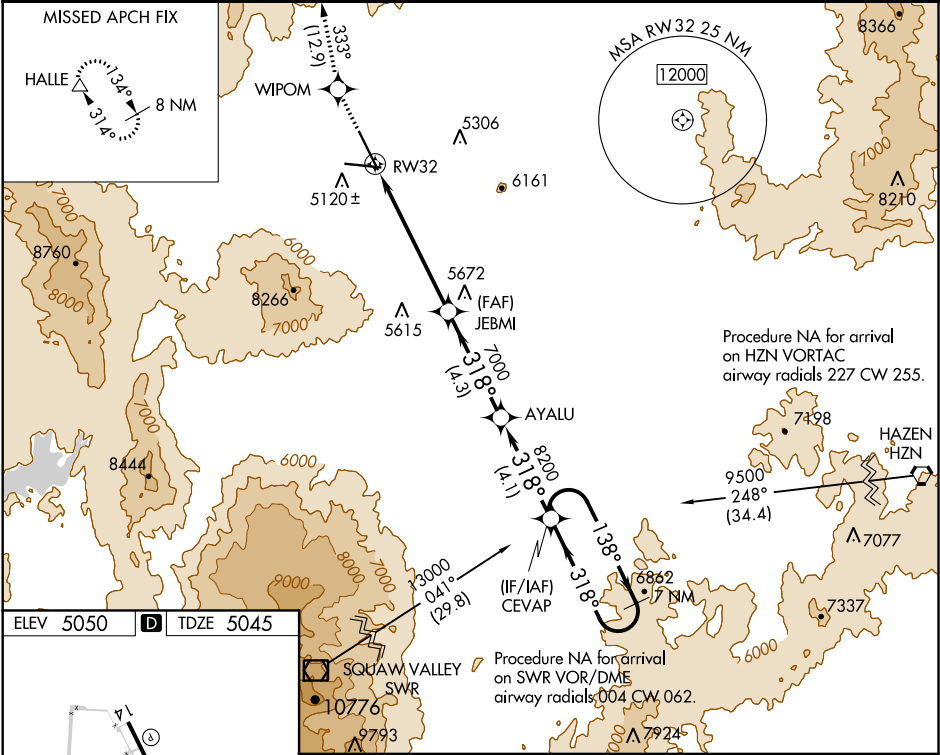
NA
-15°C

When VGSI inoperative, Circling Rwy 8 NA at night. DME/DME RNP-0.3 NA. When local altimeter setting not received, use Reno/Tahoe Intl altimeter setting and increase all DA 115 feet and all MDA 120 feet. Inoperative table does not apply. Circling NA for Cat D southwest of Rwy 14-32.

MALSR

MISSED APPROACH: Climb to 14000 direct WIPOM and on track 333° to HALLE and hold, continue climb-in-hold to 14000.

AWOS-3 135.175	NORCAL APP CON 126.3 353.9	UNICOM 122.7 (CTAF)
--------------------------	--------------------------------------	-------------------------------



14000 ↑	WIPOM ✧	tr 333°	HALLE △					

SW-4, 03 DEC 2020 to 31 DEC 2020

SW-4, 03 DEC 2020 to 31 DEC 2020