

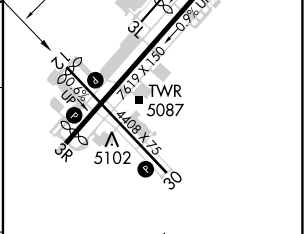
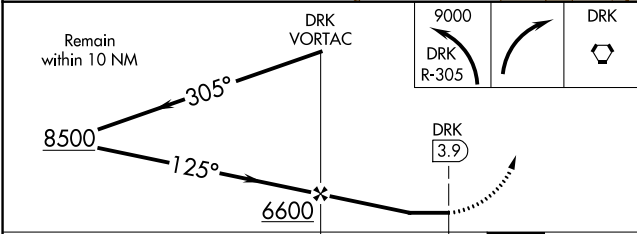
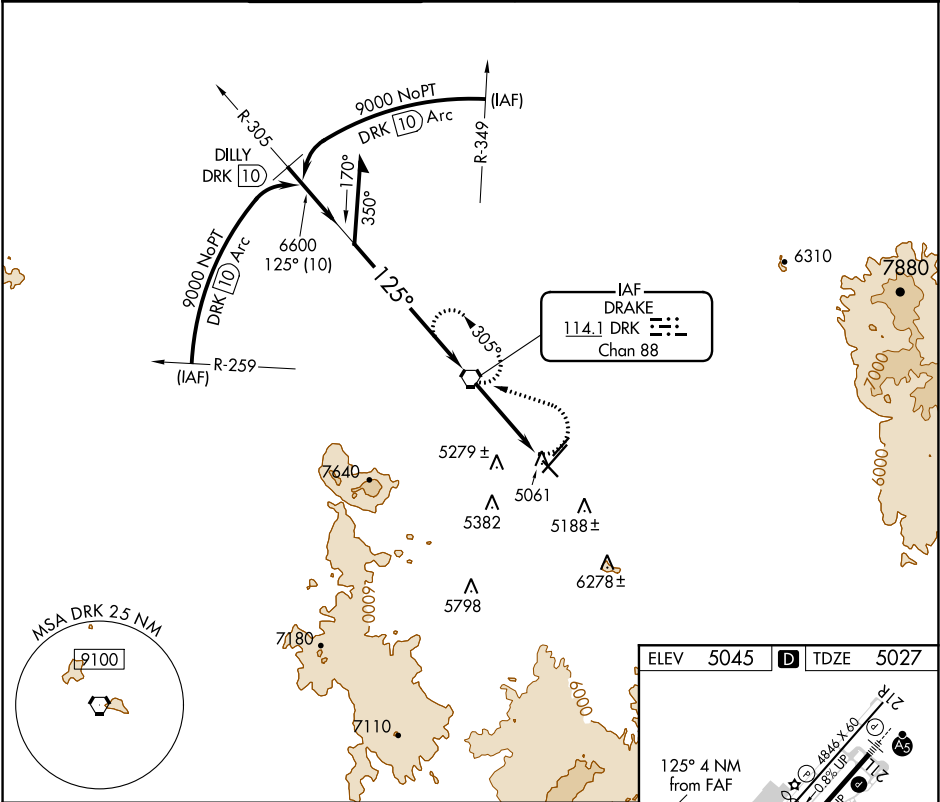
VORTAC DRK	APP CRS	Rwy Idg	4258
114.1	125°	TDZE	5027
Chan 88		Apt Elev	5045

VOR RWY 12

PRESCOTT RGNL - ERNEST A LOVE FIELD (PRC)

	Straight-in Rwy 12 NA at night, Circling Rwy 3L, 12, 30 NA at night. Rwy 12 helicopter visibility reduction below 1 SM NA. Circling NA for Cat D southeast of Rwy 3R-21L.	MISSED APPROACH: Climbing left turn to 9000 via DRK VORTAC and DRK R-305, then turn right direct DRK VORTAC and hold.
--	--	---

ATIS	PHOENIX APP CON	PRESCOTT TOWER ★	GND CON	CLNC DEL	128.75 (12-30)	UNICOM
127.2	133.575 281.55	125.3 (CTAF) 257.9	121.7	119.25	125.3 (CTAF) (3R-21L)	122.95



CATEGORY	A	B	C	D
S-12	5540-1 513 (500-1)	5540-1½ 513 (500-1½)	5540-1¾ 513 (500-1¾)	5540-1¾ 513 (500-1¾)
CIRCLING	5540-1 495 (500-1)	5760-1 715 (800-1)	6080-3 1035 (1100-3)	

MIRL Rwy 3L-21R and 3R-21L	MIRL Rwy 12-30	REIL Rwy 3R, 12, and 30
FAF to MAP 3.9 NM		
Knots	60	90 120 150 180
Min:Sec	3:54	2:36 1:57 1:34 1:18

SW-4, 03 DEC 2020 to 31 DEC 2020

SW-4, 03 DEC 2020 to 31 DEC 2020