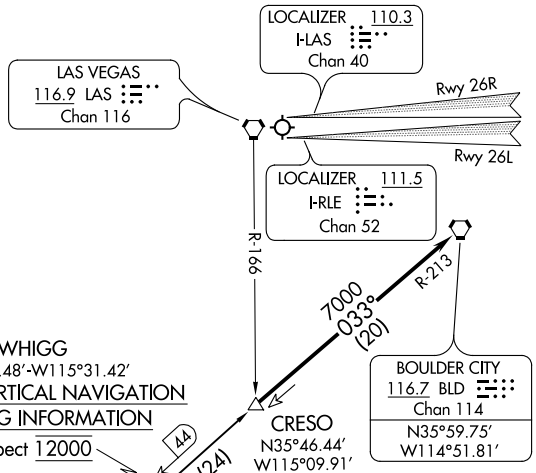


LAS VEGAS APP CON
118.4 307.25
LAS VEGAS TOWER
118.75 257.8 (Rwy 1L/19R, 1R/19L)
119.9 257.8 (Rwy 8L/26R, 8R/26L)
D-ATIS
132.4



WHIGG
N35°30.48'-W115°31.42'
TURBOJET VERTICAL NAVIGATION
PLANNING INFORMATION
Expect 12000

JOKUR
N35°02.51'-W116°23.98'
TURBOJET VERTICAL
NAVIGATION PLANNING
INFORMATION
Expect FL240

GOFFS
114.4 GFS 
Chan 91

The map shows two land parcels, DAGGETT and HECTOR, with their respective corner points and bearings. The DAGGETT parcel is on the left, and the HECTOR parcel is on the right. They are separated by a line representing a boundary or easement. The map includes bearings and distances for the corners and the boundary line between the two parcels.

DAGGETT
 113.2 DAG
 Chan 79
 N34°57.75' W116°34.69'
 L-7, H-4

HECTOR
 112.7 HEC
 Chan 74
 N34°47.82' W116°27.78'
 L-7, H-4

NOTE: Chart not to scale.

ARRIVAL ROUTE DESCRIPTION

DAGGETT TRANSITION (DAG.CRESO4): From over DAG VORTAC via DAG R-047 and BLD R-213 to CRESO, thence. . . .

HECTOR TRANSITION (HEC.CRESO4): From over HEC VORTAC via HEC R-032 and BLD R-213 to CRESO, thence. . .

... From over CRESO then on BLD R-213 to BLD VORTAC. Runways 1, 8, and 19 expect RADAR vectors to final approach course. From BLD VORTAC, expect ILS approach Runway 26L/R.