

LOC/DME I-LAS	APP CRS	Rwy Idg	26R	26L
110.3	259°	12639	10525	
Chan 40		TDZE	2067	2069
		Apt Elev	2181	2181

ILS or LOC RWY 26R
MC CARRAN INTL (LAS)

⚠ Inop table does not apply to Sidestep Rwy 26L.

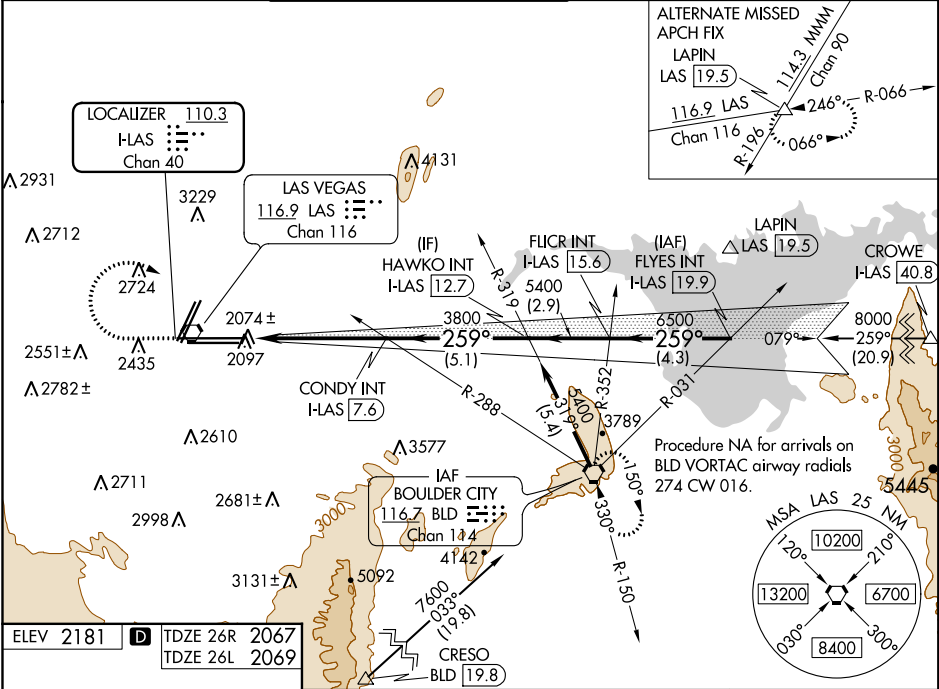
⚠ For inop ALS, increase S-ILS 26R all Cats visibility to 1 SM, and S-LOC 26R Cat D and E visibility to 1½ SM.




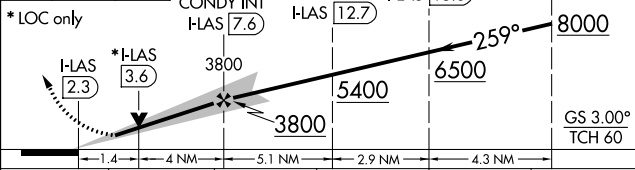

MALS Rwy 26R

MALSF Rwy 26L

MISSED APPROACH: Climb to 3200 then climbing right turn to 6000 direct BLD VORTAC and hold, continue climb-in-hold to 6000.

D-ATIS	LAS VEGAS APP CON	LAS VEGAS TOWER	GND CON	CLNC DEL	CPDLC
132.4	125.025 379.15 (West) 125.6 282.2 (East)	118.75 257.8 (Rwy 1L/19R, 1R/19L) 119.9 257.8 (Rwy 8L/26R, 8R/26L)	121.1 270.8 E of 1R/19L 121.9 254.3 W of 1R/19L	118.0	



3200	6000	BLD	VGSI and ILS glidepath not coincident (VGSI Angle 3.00°/TCH 84).			FLYER INT I-LAS 19.9
						
* LOC only			CONDY INT I-LAS 7.6	HAWKO INT I-LAS 12.7	FLICR INT I-LAS 15.6	
						
			GS 3.00° TCH 60			
CATEGORY	A	B	C	D	E	
S-ILS 26R	2359-¾ 292 (200-¾)					
S-LOC 26R	2560-¾ 493 (400-¾)	2560-1½ 493 (400-1½)				
SIDESTEP RWY 26L	2560-1 491 (400-1)	2560-1½ 491 (400-1½)		2560-2 491 (400-2)		
 CIRCLING	3020-1¼ 839 (900-1¼)	3040-1¼ 859 (900-1¼)	3100-2¾ 919 (1000-2¾)	3540-3 1359 (1400-3)		

SW-4, 03 DEC 2020 to 31 DEC 2020

SW-4, 03 DEC 2020 to 31 DEC 2020