



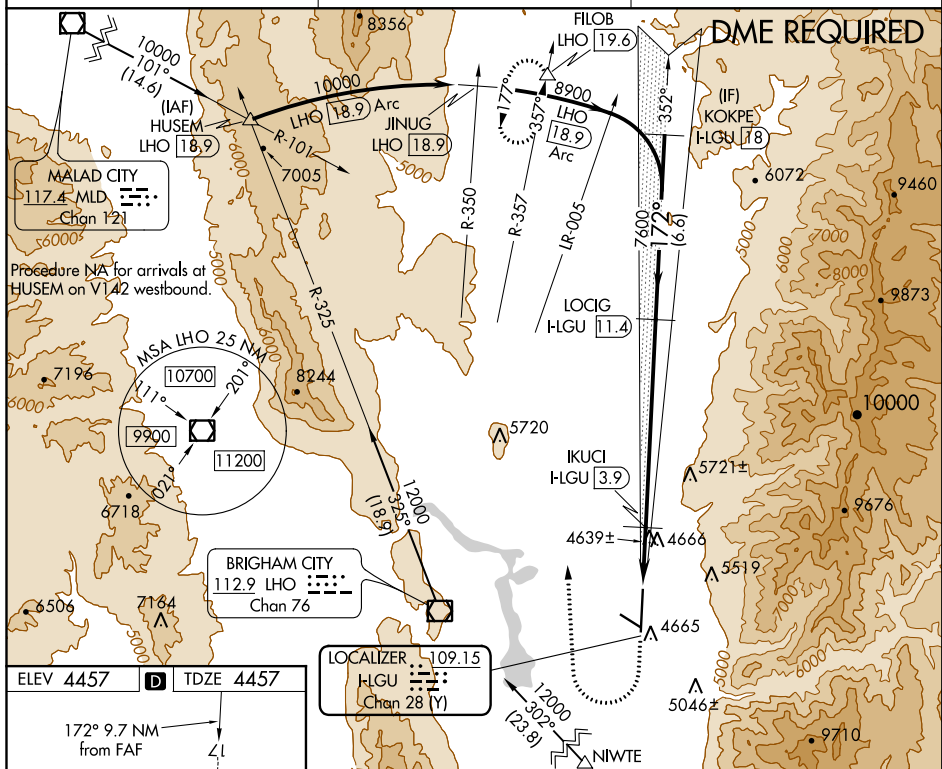


LOC/DME F-LGU 109.15 Chan 28 (Y)	APP CRS 172°	Rwy Idg 9010 TDZE 4457 Apt Elev 4457
--	------------------------	---

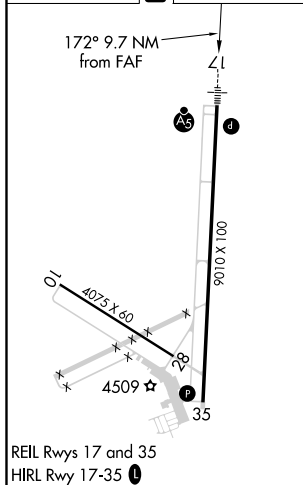
ILS or LOC/DME RWY 17
LOGAN-CACHE (LGU)


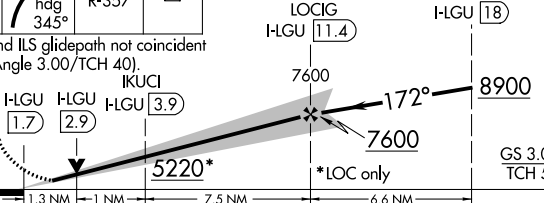
  -15°C	Circling NA east of Rwy 17-35 Night Landing: Rwy 10, 28 NA.	 	MISSED APPROACH: Climb to 5800 then climbing right turn to 12000 on heading 345° and on LHO VOR/DME R-357 to FIOLOB INT/LHO 19.6 DME and hold, continue climb-in-hold to 12000.
---	--	--	---

ASOS 135,275	SALT LAKE CENTER 127.7 354,125	UNICOM 122.8 (CTAF) 0
------------------------	--	---------------------------------



ELEV 4457	D	TDZE 4457
-----------	----------	-----------



5800 ↑	12000  hdg 345°	LHO R-357 △	Use I-LGU DME when on localizer course.			
VGS1 and ILS glidepath not coincident (VGS1 Angle 3.00/TCH 40).						
CATEGORY	A		B	C	D	
S-ILS 17	4669-½		212 (300-½)			
S-LOC 17	4900-½ 443 (500-½)		4900-⅞ 443 (500-⅞)			
CIRCLING	4900-1 443 (500-1)	4940-1 483 (500-1)	4940-1½ 483 (500-1½)		5060-2 603 (700-2)	