

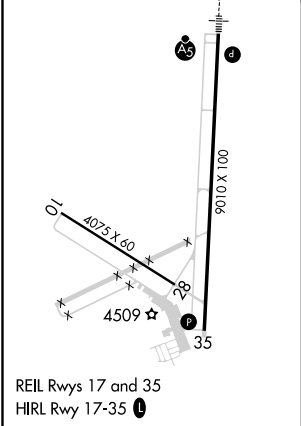
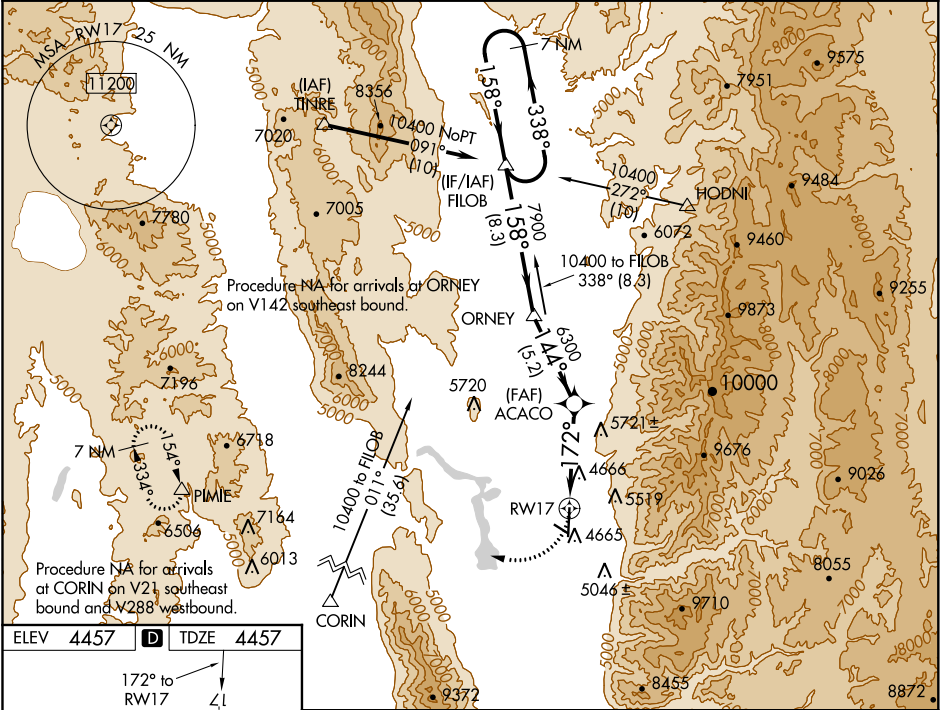
APP CRS	Rwy Idg	9010
172°	TDZE	4457
	Apt Elev	4457

RNAV (GPS) RWY 17

LOGAN-CACHE (LGU)

<p>⚠ DME/DME RNP-0.3 NA. Circling NA east of Rwy 17-35. ⚠ Night Landing: Rwy 10-28 NA. ⚠ Inop table does not apply to LNAV Cats C/D. *Missed approach requires minimum climb of 310 feet per NM to 7700.</p>	<p>MALSR </p>	<p>MISSED APPROACH: Climbing right turn to 10000 direct PIMIE and hold, continue climb-in-hold to 10000.</p>
---	--------------------------	---

<p>ASOS 135.275</p>	<p>SALT LAKE CENTER 127.7 354.125</p>	<p>UNICOM 122.8 (CTAF) 0</p>
---------------------------------------	---	--



<div>10000</div> <div></div> <div>PIMIE</div>	VGSI and descent angles not coincident (VGSI Angle 3.00/TCH 40).		7 NM Holding Pattern	
<div><div><div>ACACO</div><div>ORNEY</div><div>FILOB</div></div><div><div>1.9 NM to RW17</div><div>3.00° TCH 50</div><div>172°</div><div>144°</div><div>158°</div><div>338°</div><div>158°</div><div>10400</div></div><div><div>7900</div><div>6300</div></div><div><div>1.9</div><div>3.7 NM</div><div>5.2 NM</div><div>8.3 NM</div></div></div>				
CATEGORY	A	B	C	D
*LNAV MDA	5100-½	643 (700-½)	5100-1⅜	643 (700-1⅜)
LNAV MDA	5800-¾ 1343 (1400-¾)	5800-1 1343 (1400-1)	5800-3	1343 (1400-3)
CIRCLING	5800-1¼ 1343 (1400-1¼)	5800-1½ 1343 (1400-1½)	5800-3	1343 (1400-3)

SW-4, 03 DEC 2020 to 31 DEC 2020

SW-4, 03 DEC 2020 to 31 DEC 2020