

WAAS CH 78037 W01A	APP CRS 007°	Rwy Idg TDZE Apt Elev	8316 5862 5958
--	------------------------	-----------------------------	---

RNAV (GPS) RWY 1

CARBON COUNTY RGNL/BUCK DAVIS FIELD (PUC)

RNP APCH.

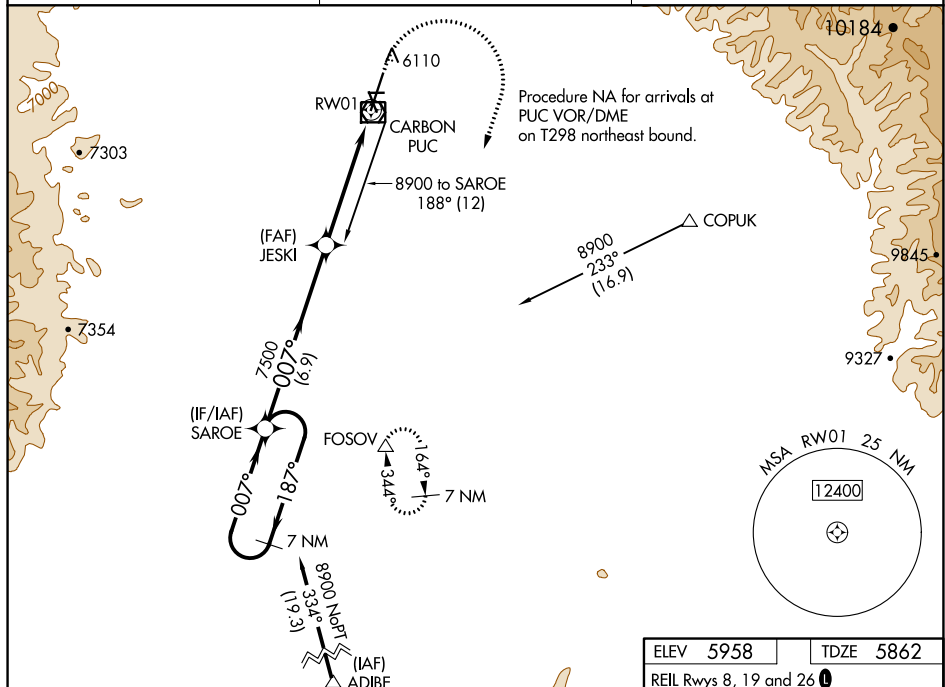
T Circling NA at night. For inoperative
A ALS increase LP Cat C/D visibility to $1\frac{3}{8}$ SM.

MALSF



MISSED APPROACH: Climb to 6300 then climbing right turn to 10000 direct FOSOV and hold, continue climb-in-hold to 10000. #Missed approach requires minimum climb of 296 feet per NM to 7500.

ASOS 135.425	SALT LAKE CENTER 133.9 370.85	UNICOM 122.8 (CTAF) ①
------------------------	---	---------------------------------

[illegible]